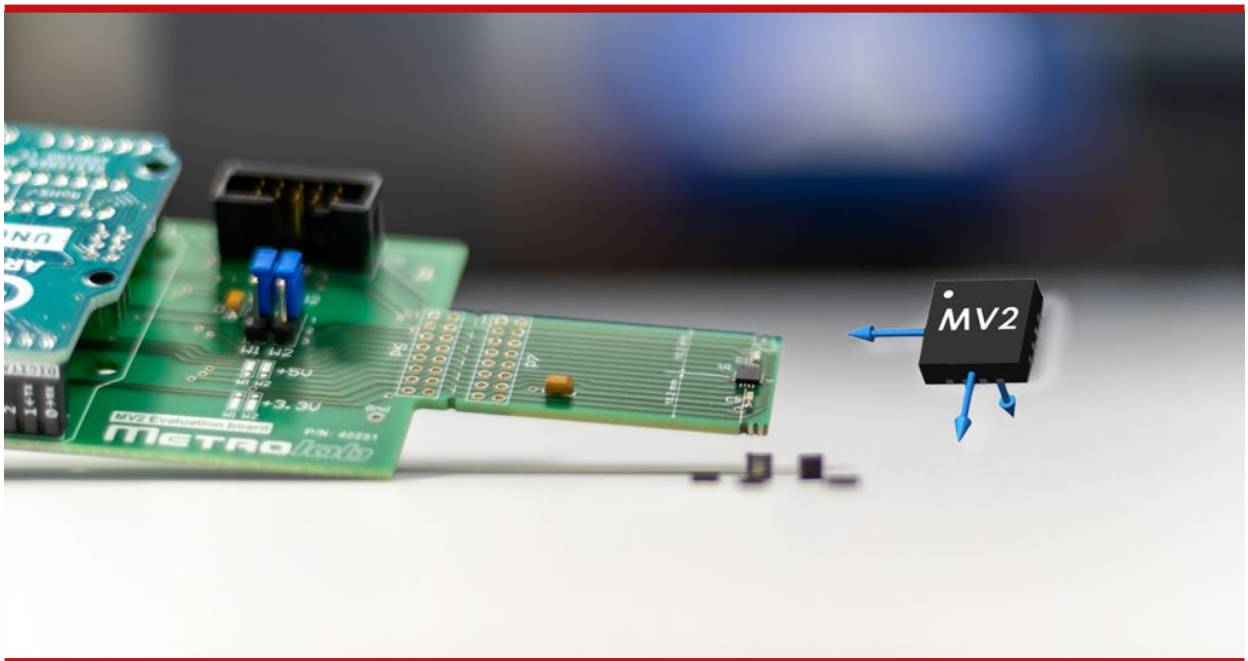


3-AXIS HALL CHIP MAGVECTOR™ MV2

THE WORLD'S MOST FLEXIBLE HALL SENSOR



DATASHEET

Version 2.5

September 2025

REVISION HISTORY

v. 0.1	December 2013	- Unpublished -
		- Unpublished -
v. 0.2	January 2014	Specific notes to MagVector MV2 release 1 added Thermometer data in table 4 Options renamed (BSM, DRP) Various corrections
v. 0.3	January 2015	- Unpublished - Range extension option
v. 1.0 r. 1.0	December 2015	First release
v. 1.1 r. 1.0	February 2016	Update and complete general specifications Add a section on mounting precautions Correct minimum ADC resolution: 14 bits, not 13 Miscellaneous corrections
v. 2.0 r. 1.0	July 2016	Add documentation of Evaluation Kit Require control signal levels to match VCC Note about using INV in Digital mode Miscellaneous clean-ups
v. 2.1 r. 1.0	September 2016	Add 0xC4 "Get version" command for Eval Kit firmware
v. 2.2 r. 1.0	March 2017	3-6: Note that the on-chip regulator tends to drift 4-1, 5-1: Replace incorrect sensitivity specs with design targets; measured values are TBD 4-4: Correct typos in Figure 5 5-3, 5-5: Clarify operation of DR and INIT 5-14: Add explanatory footnote for Refresh Rate 5-16: Describe noise characteristics of single-axis modes 6-4-2: Clarify the <COM port> parameter
v. 2.2 r. 1.1	July 2017	Fix document meta-data
v. 2.3 r. 1.0	November 2017	4-1, 5-1: Update specifications with results from characterization study 5-9: Fix Example 5-10: Fix description of data output format
v. 2.4 r. 1.0	December 2017	4-1, 5-1: Add performance characteristics for VCC=5 V Indicate that the CS and D-A signals are active-low
v. 2.4 r. 1.1	May 2019	Insert block diagram corresponding to pin-out

v.2.5 r. 1.0

June 2020

Update build instructions for MV2 Evaluation Kit software
Miscellaneous clarifications

CONTENTS

1- OVERVIEW	9
1-1 Features	9
1-2 Sample Applications	9
1-3 General Description	9
2- GENERAL	10
2-1 Package dimensions and marking.....	10
2-2 Mounting Precautions	11
2-3 Absolute Maximum Ratings.....	11
2-4 Operating Conditions.....	12
2-5 Pinout	13
2-6 Power Supply	14
2-7 Operating Modes.....	15
2-8 Sensing Device	15
2-9 Signal Conditioning	16
2-10 Measurement Axis selection	16
3- ANALOG MODE OPERATION	18
3-1 Performance Characteristics.....	18
3-2 Signal Conditioning – Analog Mode.....	23
3-3 Output stage.....	23
3-4 Application Circuit	24
3-5 Option settings in analog mode.....	24
3-6 RA – Range.....	25
3-7 MA – Measurement Axis	25
3-8 LP – Low Power.....	26
3-9 INV – Invert.....	26
3-10 EMR – Extended Measurement Range	26
4- DIGITAL MODE OPERATION	27
4-1 Performance Characteristics.....	27

4-2 Signal Conditioning – Digital Mode.....	29
4-3 A/D conversion	30
4-4 Output stage	30
4-5 Application Circuit	30
4-6 Multiple devices	31
4-7 Serial communication	31
4-8 Communication Protocol	32
4-9 Data format – Data In	33
4-10 Data Format – Data Out.....	34
4-11 Registers	35
4-12 OS – Output Selection	36
4-13 RA – Range.....	37
4-14 RE – Resolution	37
4-15 MA – Measurement Axis	38
4-16 SP – Status Position.....	39
4-17 PO – Permanent Output	39
4-18 LP – Low Power	40
4-19 INV – Invert.....	40
4-20 HC – High Clock.....	40
4-21 EMR – Extended Measurement Range	40
4-22 LMR – Large Measurement Range.....	40
4-23 TC – Temperature Compensation	41
5- EVALUATION KIT	42
5-1 Test Board	42
5-2 Arduino Board.....	46
5-3 Arduino Firmware	47
5-3-1 Functional overview.....	47
5-3-2 Command definitions.....	48
5-3-3 Return status definitions	49
5-3-4 Rebuilding the firmware	50

5-4 Host Software	51
5-4-1 Functional overview.....	51
5-4-2 Installation and execution	51
5-4-3 Setup file format.....	53
5-4-4 Recompilation	54
5-4-5 Development environment.....	54
5-4-6 Installing the libxml2 library.....	55

List of Figures

Figure 1. Block diagram.....	9
Figure 2. Connections for 5 V supply (left) and 3.3 V supply (right)	15
Figure 3. Conceptual diagrams of horizontal (left) and vertical (right) Hall sensors	16
Figure 4. Typical nonlinearity plot, VCC = 3.3 V	22
Figure 5. Typical nonlinearity plot, VCC = 5 V	22
Figure 6. Block diagram of the signal conditioning – analog mode	23
Figure 7. Circuits for sensor control and reading – analog mode	24
Figure 8. Block diagram of the signal conditioning – digital mode	30
Figure 9. Circuit for sensor control and reading – digital mode.....	31
Figure 10. Parallel connection of MagVector MV2s.....	31
Figure 11. Timing diagram of one word.....	32
Figure 12. Sequence of data for communicating with the MagVector MV2.....	33
Figure 13. Timing diagram of the register read back	33
Figure 14. Format of Data In	33
Figure 15. Format of Data Out	34
Figure 16. Output of one particular axis as a function of field strength.	35
Figure 17. Timing of the data out when the resolution set to 14 bits.	38
Figure 18. MagVector MV2 Evaluation Kit test board.....	42
Figure 19. Schematics of MagVector MV2 Evaluation Kit test board.....	44
Figure 20. Arduino/Genuino UNO connected to MagVector MV2 test board.....	46

List of Tables

Table 1. Absolute maximum ratings.....	11
Table 2. Operating conditions	12
Table 3. Pinout – analog mode operation.....	13
Table 4. Pinout – digital mode operation.....	14
Table 5. Operating modes.....	15
Table 6. Performance characteristics in analog mode	18
Table 7. Selectable options – analog mode	24
Table 8. Range selection – analog mode.....	25
Table 9. Measurement axis selection – analog mode.....	26
Table 10. Performance characteristics in digital mode.	27
Table 11. Serial Peripheral Interface specification	29
Table 12. Format of Data In.....	34
Table 13. Contents of Register 00	35
Table 14. Contents of Register 01	35
Table 15. Contents of Register 10	36
Table 16. Output Selection.....	36
Table 17. RA – Range selection – digital mode	37
Table 18. RE – Resolution Selection	37
Table 19. MA – Measurement axis selection – digital mode	38
Table 20. Status Position bit.....	39
Table 21. Signal routing of MagVector MV2 Evaluation Kit test board	45
Table 22. Connections from MagVector MV2 Evaluation Kit test board to external digitizer.	45
Table 23. Command definitions.	48
Table 24. Return status definitions	49

MAGVECTOR™ MV2 3-AXIS MAGNETIC SENSOR

1- OVERVIEW

1-1 FEATURES

Measures total field: 3-axis

Selectable measurement ranges:

from 100 mT to 30 T

Low noise: 300 nT/VHz

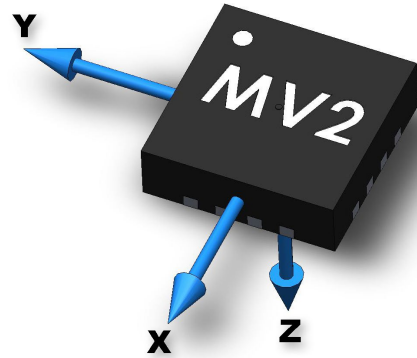
Supply voltage: 3.3 V or 5 V

Analog and digital interfaces

Selectable measurement rate: up to 3 kHz

Selectable resolution: 14 to 16 bits

Non-magnetic package



1-2 SAMPLE APPLICATIONS

High performance embedded applications

Custom multi-probe field mappers

Magnetic flux leakage measurement

1-3 GENERAL DESCRIPTION

The MagVector™ MV2, designed and manufactured by MPS Tech Switzerland (formerly Sensima Technology) in Gland, Switzerland, is a robust 3-axis magnetic Hall effect sensor. It features an analog as well as digital interface, selectable by the user. The analog mode delivers voltages proportional to the magnetic field, and the measurement range is configurable via simple wiring. In the digital mode, the MagVector MV2 communicates through a Serial Peripheral Interface (SPI) for configuration and data delivery. The non-magnetic QFN package is compatible with MRI environments.

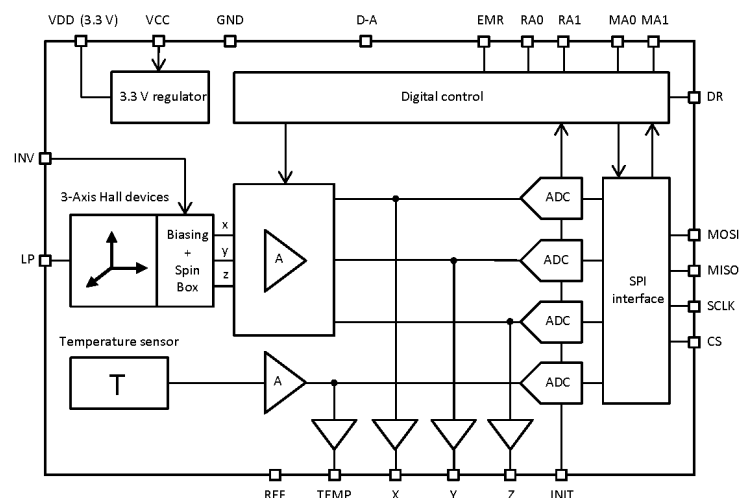
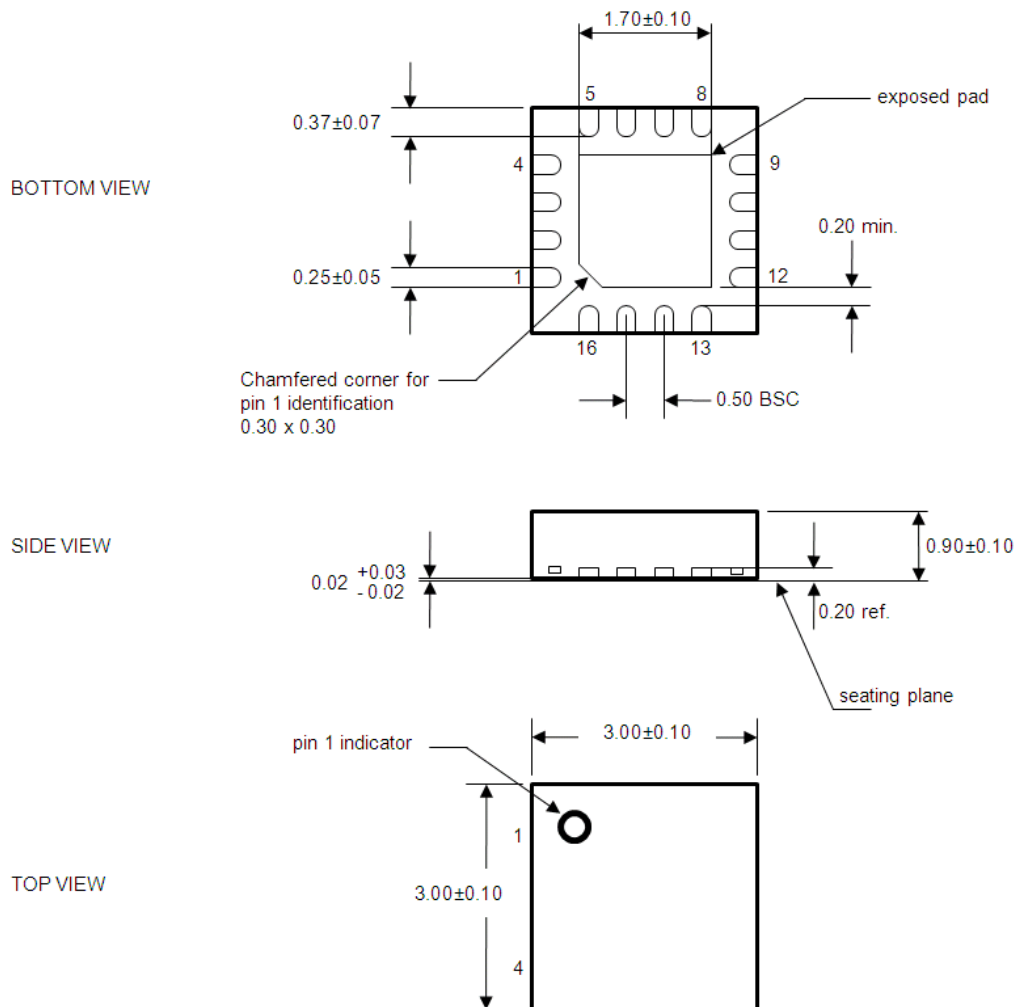


Figure 1. Block diagram

2- GENERAL

2-1 PACKAGE DIMENSIONS AND MARKING

Package: 16L QFN 3x3x0.9mm, 0.50mm pitch with exposed pad of 1.70x1.70mm



NOTES:

All dimensions are in mm.

Package dimensions do not include mold flash, protrusions, burrs or metal smearing.

Co-planarity applies to the exposed terminals. Maximum co-planarity shall be 0.08.

Compliant with JEDEC-220.

Marking: 3 lines, e.g. "03/MV2/5AC". The first line is the version number, the second is the product identifier, and the third is an internal identification code.

2-2 MOUNTING PRECAUTIONS

When mounting the MagVector MV2 on the printed circuit board (PCB), it is important to avoid stress. Stress induces piezoelectric voltages that interfere with the measurement of the Hall voltages; in particular, they vary with temperature and can cause offset drifts with very long time constants.

Specific recommendations include:

- PCBs made of FR-4 are recommended over, for example, ceramic PCBs, since the coefficient of thermal expansion of the substrate better matches that of the package.
- After soldering, the package should not be mechanically constrained in any way.

2-3 ABSOLUTE MAXIMUM RATINGS

Table 1. Absolute maximum ratings

Parameters	Min	Max	Unit
DC voltage at VCC	-0.5	7	V
DC voltage at VDD	-0.5	4	V
Input current on any pin (1)	-100	100	mA
Electrostatic discharge (2)		±2	kV
Package thermal resistance:			
– Junction to ambient (Theta JA)		50	°C/W
– Junction to case (Theta JC)		12	°C/W
Storage temperature	-40	150	°C

Notes:

These values denote absolute maximum ratings. These ratings are stress ratings only. Functional operation of the device at these conditions is not implied. Exposure to absolute maximum rating conditions for extended periods may affect device reliability.

(1) Norm: JEDEC78

(2) Norm: MIL 883 E method 3015

2-4 OPERATING CONDITIONS

Table 2. Operating conditions

Parameter	Symbol	Min	Typ	Max	Unit
DC supply voltage ¹	VCC	4.5	5	5.5	V
DC supply voltage	VDD	3.28	3.3	3.32	V
DC supply current	I _{sup}	17	18.5	20	mA
Digital input signals:					
– “Low” input voltage	V _{il}			30% of VCC	V
– “High” input voltage	V _{ih}	70% of VCC			V
– Input current	I _i	±30		±100	μA
Digital output signals:					
– “Low” output voltage (1)	V _{ol}			0.4	V
– “High” output voltage (2)	V _{oh}	4			V
Operating temperature	T _{op}	-40		+125	°C

Notes:

The maximum drive capability of the analog outputs is 100 kΩ / 500 pF.

The digital input levels must match the supply used: 5 V when supplied with 5 V and 3.3 V when supplied with 3.3 V.

The digital output level matches the supply used: 5 V when supplied with 5 V and 3.3 V when supplied with 3.3 V.

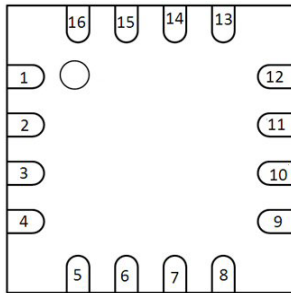
Measurement conditions: VCC = 5 V; I_o = +1 mA.

Measurement conditions: VCC = 5 V; I_o = -1 mA.

¹ For 5V operation – see Section 2-6 .

2-5 PINOUT

Top view:



The functions of the pins differ according to the mode of operation, analog or digital – see Table 3 and Table 4. Unused pins can be left unconnected; the internal pull-down resistor is ~100 kΩ.

Table 3. Pinout – analog mode operation

Pin	Name	Type	Direction	Description	Pad input option
1	RA0	Digital	In	Field range 0	Pull-down
2	RA1	Digital	In	Field range 1	Pull-down
3	MA0	Digital	In	Meas. Axis 0	Pull-down
4	MA1	Digital	In	Meas. Axis 1	Pull-down
5	Z	Analog	Out	Z-axis output	
6	TEMP	Analog	Out	Temperature output	
7	REF	Analog	Out	Volt. reference (VCC/2)	
8	VDD	Supply	Power	Internal core supply voltage (3.3 V)	
9	$\overline{\text{D}}\text{-A}$	Digital	In	Digital - Analog mode	1
10	LP	Digital	In	Low power mode	Pull-down
11	INV	Digital	In	Output inversion	Pull-down
12	EMR	Digital	In	Extended Measurement Range	Pull-down
13	GND	Supply	Power	Ground	
14	VCC	Supply	Power	Main supply voltage (5 V)	
15	Y	Analog	Out	Y-axis output	
16	X	Analog	Out	X-axis output	

Table 4. Pinout – digital mode operation

Pin	Name	Type	Direction	Description	Pad input option
1	MISO	Digital	Out	Serial MISO	Pull-down
2	SCLK	Digital	In	Serial CLK	Pull-down
3	$\overline{\text{CS}}$	Digital	In	Serial Chip Select	Pull-down
4	MOSI	Digital	In	Serial MOSI	Pull-down
8	VDD	Supply	Power	Internal core supply voltage (3.3 V)	
9	$\overline{\text{D}} - \text{A}$	Digital	In	Digital - Analog mode	0 or floating
10	INIT	Digital	In	ADC initialization	Pull-down
11	INV	Digital	In	Analog mode output inversion	0 or floating
12	DR	Digital	Out	Data ready	Pull-down
13	GND	Supply	Power	Ground	
14	VCC	Supply	Power	Main supply voltage (5 V)	

Unused pins may be left unconnected. Note, however, that the INV control line, normally used only for Analog mode, also affects Digital mode operation; consequently, if connected in Digital mode, it should be tied to LOGIC 0.

2-6 POWER SUPPLY

The MagVector MV2 is designed to be supplied with 5 V. An on-chip voltage regulator reduces and stabilizes the 5 V down to 3.3 V, which is the chip core supply voltage. However, it is also possible to supply the chip with 3.3 V. In that case, since there is no regulation, the supply needs to be stable within 0.5 % to reach the specified resolution.

The digital output level matches the supply used: 5 V when supplied with 5 V and 3.3 V when supplied with 3.3 V.

When using a 5 V supply, the internal core supply voltage can be monitored on the VDD pad.

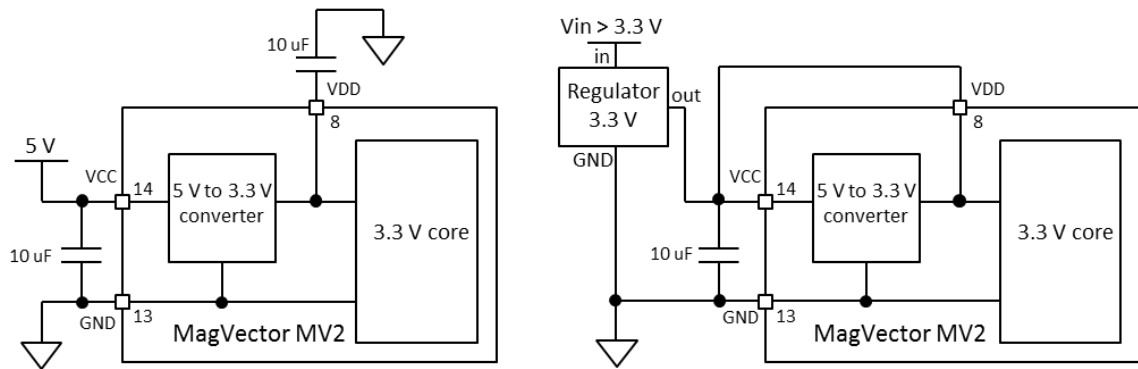


Figure 2. Connections for 5 V supply (left) and 3.3 V supply (right)

Notes:

For best performance, use the 3.3 V configuration, with a high-precision external voltage regulator. The on-chip voltage regulator is sensitive to temperature drift.

In the 3.3 V configuration, VCC must be shorted to VDD.

The 10 µF capacitor values are approximate recommendations. In the 3.3 V configuration, the choice of the value of the decoupling capacitor depends on the specifications of the external voltage regulator. It is recommended to place a 100 nF decoupling capacitor in parallel to each 10 µF capacitors.

2-7 OPERATING MODES

The MagVector MV2 can be operated in two modes: digital or analog, depending on the logic level of the $\overline{\text{D-A}}$ input pin. If the $\overline{\text{D-A}}$ pin is tied to LOGIC 0 or left floating, the MagVector MV2 is operating in digital mode (default). In order to switch the operating mode of the MagVector MV2 from digital to analog, the $\overline{\text{D-A}}$ pin has to be tied to LOGIC 1 (VCC).

Table 5. Operating modes

$\overline{\text{D-A}}$	Mode	See:
0	DIGITAL	Page 27, Section 0 Digital Mode Operation
1	ANALOG	Page 18, Section 0 Analog Mode Operation

2-8 SENSING DEVICE

The three components of the magnetic field are detected by three orthogonal Hall devices: the component B_z normal to the die plane is detected by a conventional “horizontal” Hall sensor, whereas the two in-plane components B_x and B_y are detected by “vertical” Hall sensors (see Figure 3).

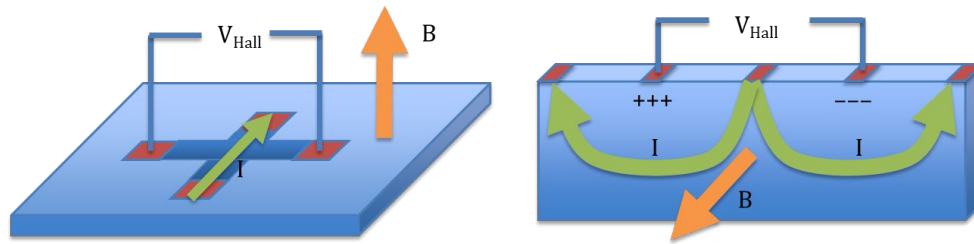


Figure 3. Conceptual diagrams of horizontal (left) and vertical (right) Hall sensors

The directions of the axes (B_x , B_y , B_z), relative to the QFN package, are shown in the diagram in Section 1-Overview. The axes are oriented as indicated by the arrows in digital mode, in the opposite direction in analog mode (see Section 2-7).

The input and output leads of the Hall devices are sequentially permuted. This “spinning current” technique has several significant benefits: it minimizes the offset and, more importantly, the offset drift; it minimizes the Planar Hall Effect; and it minimizes 1/f noise.

The sensing volume has the shape of a thin square slab, 200x200 μm in the die plane and about 5 μm high. The Hall sensors are distributed such that the measured Hall voltage of all three axes closely approximates the flux density averaged throughout the slab. The sensing volume is located, with a precision of 50 μm , in the center of the QFN package, both horizontally and vertically.

2-9 SIGNAL CONDITIONING

By default, the 3 measurement signals are sequentially multiplexed, amplified and de-multiplexed (see Figure 6 for analog mode and Figure 8 for Digital Mode). This means that a single amplifier is used for all 3 axes. By controlling the gain, the user sets the magnetic field range. A separate, fixed-gain amplifier amplifies the temperature sensor output.

By default, the following ranges can be selected: 100 mT, 300 mT, 1 T and 3 T. The amplifier saturates when the magnetic field strength exceeds the range value by approximately 20%; for instance, if the range is 100 mT, the output saturates at around 120 mT.

Additional option bits allow the range to be extended by 30% or by a factor 10x – see Section 26 for analog mode and Sections 4-21 and 4-22 for digital mode,

2-10 MEASUREMENT AXIS SELECTION

By default, the 3 magnetic axes are multiplexed continuously at a rate well above the output frequency.

It is possible to prevent the continuous multiplexing and amplify just the x-, y- or z-axis. Single-axis mode is useful when the user wants to optimize the signal-to-noise ratio of one particular axis.

This mode is also recommended when a large magnetic field is applied in a direction other than the one being measured. In such conditions, without enabling the single-axis mode, the amplifier may saturate when amplifying the large Hall voltage. Since the amplifier recovery time is relatively long, the saturation can affect the value read for other axes.

Note that in single-axis mode, only one of the 3 magnetic field channels provides meaningful values. For instance, if the selected measurement axis is only x, the channels y and z are disabled, and therefore provide non-usable outputs.

3- ANALOG MODE OPERATION

3-1 PERFORMANCE CHARACTERISTICS

Table 6. Performance characteristics in analog mode

Performance characteristics in analog mode, VCC = 3.3 V, T = 25°C²

Parameter		Min	Typ	Max	Std	Units	Note
Sensitivity, X & Y axes	0.1 T range	15.29	16.91	17.78	0.44	V/T	
	0.3 T range	5.29	5.71	5.84	0.09	V/T	
	1 T range	1.60	1.68	1.69	0.02	V/T	
	3 T range	0.61	0.63	0.66	0.01	V/T	Only measured to 1.6T
Sensitivity, Z axis	0.1 T range	17.50	17.71	18.40	0.27	V/T	
	0.3 T range	5.87	5.95	6.04	0.05	V/T	
	1 T range	1.70	1.72	1.74	0.01	V/T	
	3 T range	0.69	0.70	0.73	0.01	V/T	Only measured to 1.6T
Sensitivity drift		-73923	238	2457	6557	ppm/°C	
Static offset		-136	3	49	16	mV	
Offset temperature drift		-106	0	2	9	mV/°C	
Measurement bandwidth		50				kHz	
Spectral noise density	X & Y axis		330			nT/VHz	
	Z axis		225			nT/VHz	
RMS noise, X & Y axes	0.1 T range	92	113	148	14	μT	
	0.3 T range	140	157	189	12	μT	
	1 T range	345	439	506	41	μT	
	3 T range	902	1161	1330	115	μT	
RMS noise, Z axis	0.1 T range	29	45	54	8	μT	
	0.3 T range	102	111	139	11	μT	
	1 T range	311	348	453	46	μT	
	3 T range	750	863	1097	110	μT	
	0.1 T range	4.2	5.2	7.1	0.8	% FS	See note at end of section

² “Min” = Minimum, “Typ” = Typical, “Max” = Maximum, and “Std” = Standard Deviation. Values are measured values for 18 units. Typical values correspond to the median value.

Integral linearity, X & Y axes	0.3 T range	3.5	4.1	5.3	0.5	% FS	
	1 T range	3.1	3.8	4.6	0.4	% FS	
	3 T range	0.02	0.03	1.16	0.24	% FS	Only measured to 1.6T
Integral linearity, Z axis	0.1 T range	6.8	7.7	8.2	0.4	% FS	
	0.3 T range	5.6	6.4	7.4	0.6	% FS	See note at end of section
	1 T range	4.9	5.8	6.6	0.5	% FS	
	3 T range	0.09	0.11	1.12	0.24	% FS	Only measured to 1.6T
Temperature output sensitivity		3.5	3.8	4.1	0.1	mV/°C	
Temperature output @ 25°C		1.2	1.2	1.3	0.0	V	

Performance characteristics in analog mode, VCC = 5 V, T = 25°C³

Parameter		Min	Typ	Max	Std	Units	Note
Sensitivity, X & Y axes	0.1 T range	18.12	18.18	19.16	0.48	V/T	
	0.3 T range	6.20	6.27	6.52	0.14	V/T	
	1 T range	1.88	1.89	1.98	0.04	V/T	
	3 T range	0.62	0.62	0.65	0.01	V/T	Only measured to 1.6T
Sensitivity, Z axis	0.1 T range	20.67	20.73	20.93	0.14	V/T	
	0.3 T range	6.68	7.04	7.06	0.21	V/T	
	1 T range	2.12	2.13	2.13	0.01	V/T	
	3 T range	0.70	0.72	0.72	0.01	V/T	Only measured to 1.6T
Sensitivity drift		-3515	-250	946	734	ppm/°C	
Static offset		-39	9	64	15	mV	
Offset temperature drift		-3	0	2	1	mV/°C	
Measurement bandwidth		50				kHz	
Spectral noise density	X & Y axis		330			nT/VHz	
	Z axis		225			nT/VHz	
RMS noise, X & Y axes	0.1 T range	89	106	120	12	μT	
	0.3 T range	135	150	166	11	μT	

³ “Min” = Minimum, “Typ” = Typical, “Max” = Maximum, and “Std” = Standard Deviation. Values are measured values for 3 units. Typical values correspond to the median value.

	1 T range	345	385	424	36	μT	
	3 T range	1039	1141	1299	114	μT	
RMS noise, Z axis	0.1 T range	51	52	53	1	μT	
	0.3 T range	96	100	112	8	μT	
	1 T range	284	297	301	9	μT	
	3 T range	837	871	903	33	μT	
Integral linearity, X & Y axes	0.1 T range	0.07	0.08	0.09	0.01	% FS	
	0.3 T range	0.08	0.09	0.12	0.01	% FS	See note at end of section
	1 T range	0.03	0.04	0.08	0.02	% FS	
	3 T range	0.02	0.03	0.03	0.01	% FS	Only measured to 1.6T
Integral linearity, Z axis	0.1 T range	0.13	0.16	0.24	0.06	% FS	
	0.3 T range	0.06	0.07	0.07	0.01	% FS	See note at end of section
	1 T range	0.16	0.17	0.19	0.02	% FS	
	3 T range	0.11	0.11	0.12	0.01	% FS	Only measured to 1.6T
Temperature output sensitivity		3.2	3.2	3.2	0.0	mV/°C	
Temperature output @ 25°C		1.1	1.1	1.1	0.0	V	

Note:

With VCC = 3.3 V, the output saturation near the top and bottom of the range leads to poor linearity. A typical plot of the residuals after subtracting the first-order fit is shown in Figure 4; the equivalent with VCC = 5 V is shown in Figure 5.

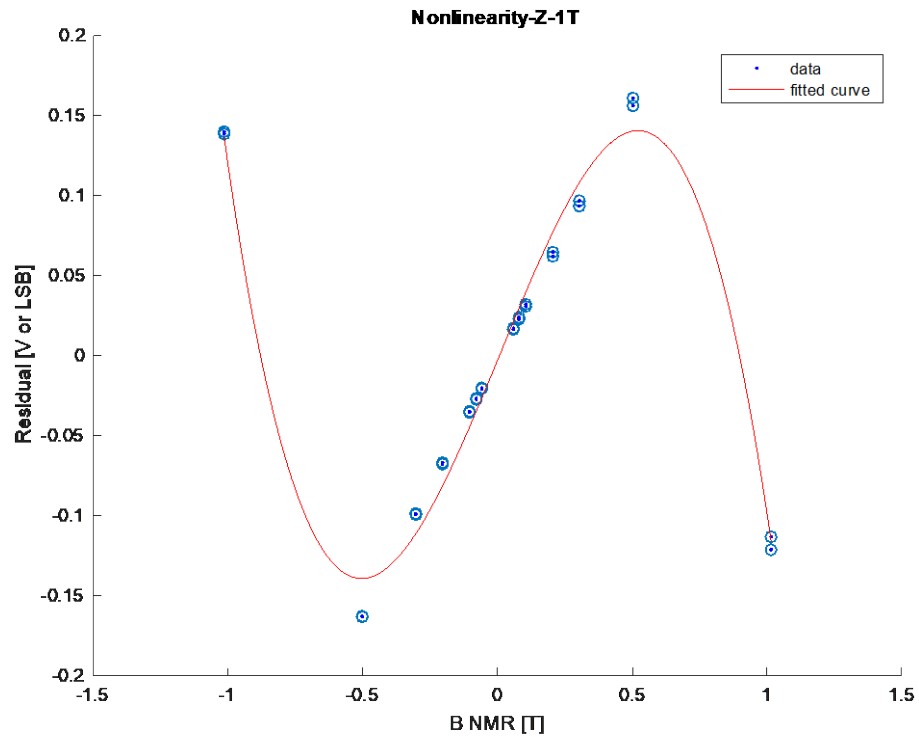


Figure 4. Typical nonlinearity plot, VCC = 3.3 V

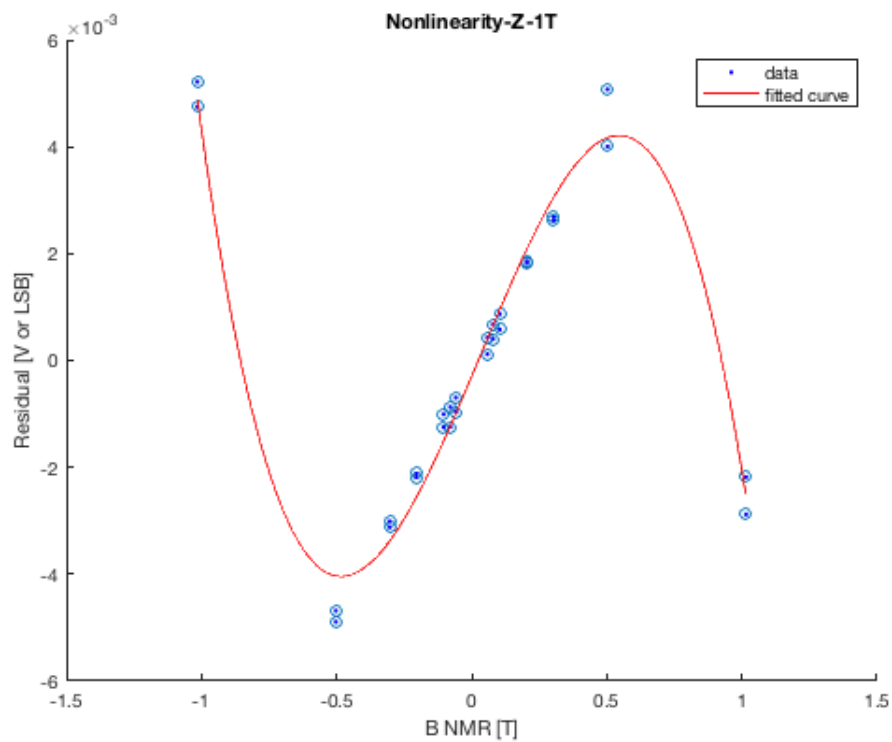


Figure 5. Typical nonlinearity plot, VCC = 5 V

3-2 SIGNAL CONDITIONING – ANALOG MODE

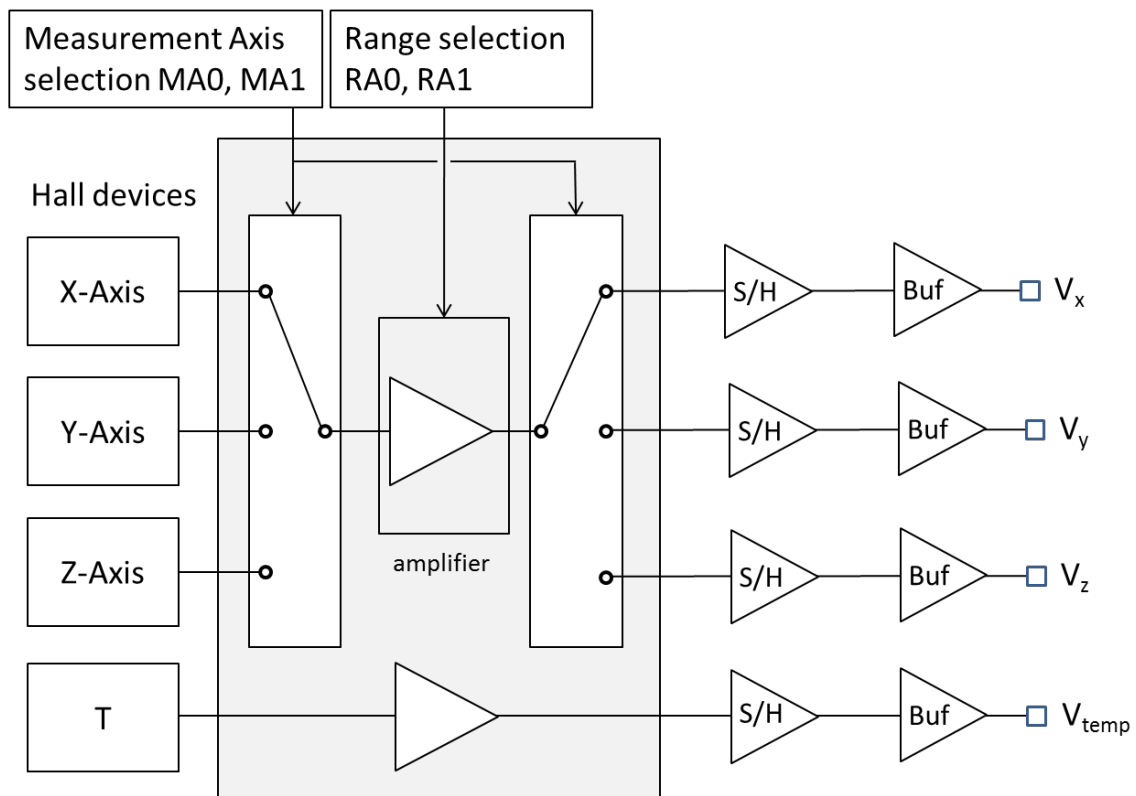


Figure 6. Block diagram of the signal conditioning – analog mode

3-3 OUTPUT STAGE

The analog voltages representing the magnetic field and the chip temperature are buffered through the output “Buf” stage. The maximum drive capability of the analog outputs is 100 k Ω / 500 pF.

The magnetic field outputs (V_x , V_y and V_z) are referenced to $V_{CC}/2$, corresponding to zero magnetic field. This reference voltage is generated internally and available on the REF pin.

V_{temp} is referenced to GND.

3-4 APPLICATION CIRCUIT

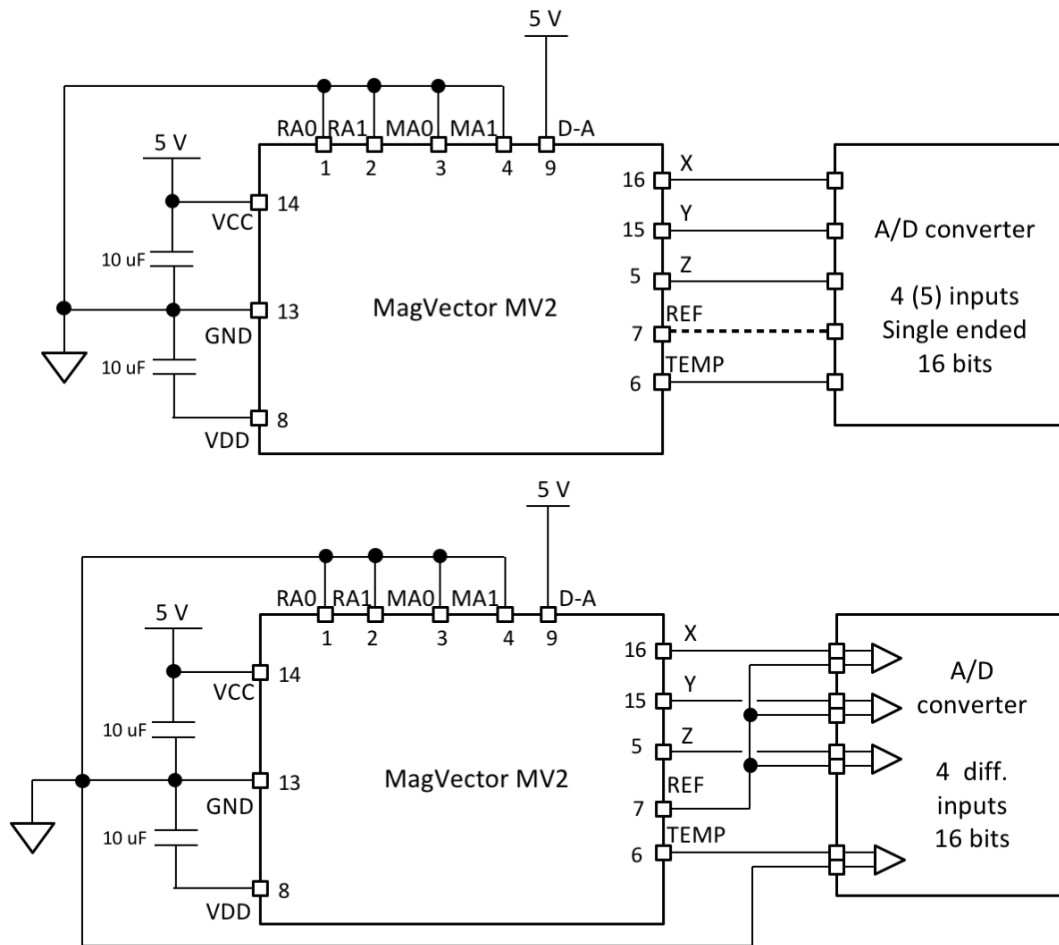


Figure 7. Circuits for sensor control and reading – analog mode

Note that all input pins are in pull-down configuration, i.e. if an input pin is not connected (left floating), it is considered as a LOGIC 0 setting.

3-5 OPTION SETTINGS IN ANALOG MODE

Note that the \overline{D} -A pin has to be tied to LOGIC 1 (VCC). The following options can be selected in analog mode:

Table 7. Selectable options – analog mode

Pin	Name	Description	See
1	RA0	Range LSB	Page 25, Section 3-6
2	RA1	Range MSB	Page 25, Section 3-6
3	MA0	Measurement Axis LSB	Page 25, Section 0
4	MA1	Measurement Axis MSB	Page 25, Section 0
10	LP	Low Power	Page 26, Section 3-8

11 INV Invert

Page 26, Section 3-9

12 EMR Extended Measurement Range

Page 26, Section 3-10

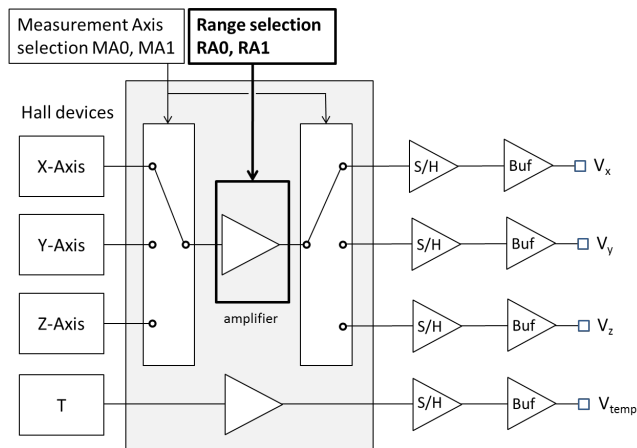
3-6 RA – RANGE

Pins: RA0 (1), RA1 (2)

The RA parameter sets the amplification gain. When the measured magnetic field is within the range (between - range to + range), the sensor output is proportional to the applied magnetic field amplitude.

Table 8. Range selection – analog mode

RA1	RA0	Magnetic field range
0	0	± 100 mT
0	1	± 300 mT
1	0	± 1 T
1	1	± 3 T



3-7 MA – MEASUREMENT AXIS

Pins: MA0 (3), MA1 (4)

The parameter MA determines which Hall device is amplified. Depending on the setting, all 3 axes are sequentially scanned and amplified, or the scanning is stopped and only one selected axis is amplified. See the table below.

The pins MA0 and MA1 are tied to GND (or left floating) or VCC to determine their logic state, LOGIC 0 or LOGIC 1, respectively.

Table 9. Measurement axis selection – analog mode

MA1	MA0	Measurement axis
0	0	3 axis
0	1	X axis
1	0	Y axis
1	1	Z axis

3-8 LP – LOW POWER

Pin: LP (10)

The MagVector MV2 can be switched to a low power mode by setting the LP pin to LOGIC 1. This mode reduces the current consumption by ~6 mA and the SNR by a factor of $\sqrt{2}$. Note that other parameters, such as temperature drift or offset, can also change.

3-9 INV – INVERT

Pin: INV (11)

When the INV pin is tied to LOGIC 1, the MagVector MV2 reverses the Hall bias currents, and therefore reverses the measured magnetic field voltages relative to the REF pin ($V_{CC}/2$). Toggling this option can be used, for example, to emulate a low frequency modulator / demodulator.

3-10 EMR – EXTENDED MEASUREMENT RANGE

Pin: EMR (12)

When the EMR option is enabled by tying the EMR pin to LOGIC 1, the MagVector MV2 increases the selected range by 30%. The intended purpose of this option is to approximately compensate the reduced voltage swing of the output buffer when using a 3.3 V supply instead of 5 V.

4- DIGITAL MODE OPERATION

4-1 PERFORMANCE CHARACTERISTICS

Table 10. Performance characteristics in digital mode.

Performance characteristics in digital mode, VCC = 3.3 V, T = 25°C^{4, 5}

Parameter		Min	Typ	Max	Std	Units	Note
Sensitivity, X & Y axes	0.1 T range	260	267	278	5	LSB/mT	
	0.3 T range	89.0	91.2	94.7	1.5	LSB/mT	
	1 T range	26.9	27.6	28.6	0.5	LSB/mT	
	3 T range	8.9	9.1	9.5	0.2	LSB/mT	Only measured to 1.6T
Sensitivity, Z axis	0.1 T range	280	289	302	6	LSB/mT	
	0.3 T range	95.5	98.5	102.9	1.8	LSB/mT	
	1 T range	28.8	29.5	30.8	0.5	LSB/mT	
	3 T range	9.7	10.0	10.4	0.2	LSB/mT	Only measured to 1.6T
Sensitivity drift		-509	102	5644	258	ppm/°C	
Digital offset		-330	15	341	150	LSB	
Digital offset drift		-8.7	0.3	1.1	1.8	LSB/°C	
Hall offset, X & Y axes	Offset	-1535	-662	906	438	μT	
	Offset drift	-18	-6	60	13	μT/°C	
Hall Offset, Z axis	Offset	-82	-32	160	67	μT	
	Offset drift	-6	0	14	5	μT/°C	
Measurement rate		0		3		kHz	Programmable

⁴ “Min” = Minimum, “Typ” = Typical, “Max” = Maximum, and “Std” = Standard Deviation. Values reported are measured values for 18 units. Typical values correspond to the median value.

⁵ Performance characteristics with VCC = 5 V are the same, as validated by 3 units. See, however, the note in Section 2-6 .

Number of bits delivered		14		16		Programmable
Spectral noise density	X & Y axes	330		nT/VHz		
	Z axis	225		nT/VHz		
RMS noise, X & Y axes	100mT, 14 bit	5.0	5.8	6.0	0.4	LSB
	100mT, 15 bit	4.0	4.0	4.0	0.0	LSB
	100mT, 16 bit	3.0	3.0	3.0	0.0	LSB
	100mT, 16+ bit	2.0	2.0	2.0	0.0	LSB
	300mT, 14 bit	3.0	3.0	3.0	0.0	LSB
	300mT, 15 bit	2.0	2.0	2.0	0.0	LSB
	300mT, 16 bit	1.0	1.1	2.0	0.2	LSB
	300mT, 16+ bit	1.0	1.0	1.0	0.0	LSB
RMS noise, Z axis	100mT, 14 bit	3.0	3.9	4.0	0.2	LSB
	100mT, 15 bit	2.0	2.3	3.0	0.4	LSB
	100mT, 16 bit	2.0	2.0	2.0	0.0	LSB
	100mT, 16+ bit	1.0	1.1	2.0	0.2	LSB
	300mT, 14 bit	2.5	3.0	3.0	0.1	LSB
	300mT, 15 bit	1.0	1.9	2.0	0.3	LSB
	300mT, 16 bit	1.0	1.0	1.0	0.0	LSB
	300mT, 16+ bit	1.0	1.0	1.0	0.0	LSB
RMS noise, All axes, 1 T and 3 T ranges	14 bit	2.0	2.7	3.0	0.4	LSB
	15 bit	1.0	1.0	2.0	0.2	LSB
	16 bit	1.0	1.0	1.0	0.0	LSB
	16+ bit	1.0	1.0	1.0	0.0	LSB
Integral linearity	X & Y axes	112	490	102564	5601	ppm FS
	Z axis	134	921	88041	5410	ppm FS
Temperature output sensitivity		88	93	102	4	LSB/°C
Temperature output @ 25°C		20879	21559	22553	476	LSB

Table 11. Serial Peripheral Interface specification

Maximum clock frequency	10 MHz
Clock duty cycle	50%
SPI standard:	Mode 0:
- CPOL (Clock Polarity)	0: CLK idle state = Low
- CPHA (Clock Phase)	0: CLK readout edge = Rising
$\overline{\text{CS}}$ idle state	High
$\overline{\text{CS}}$ setup time	50 ns
$\overline{\text{CS}}$ hold time	50 ns
DORD (Data order)	0: MSB first
Data word size	16 bits
Minimum data word separation	100 ns
Data availability	DR or MISO – see Section 4-16

4-2 SIGNAL CONDITIONING – DIGITAL MODE

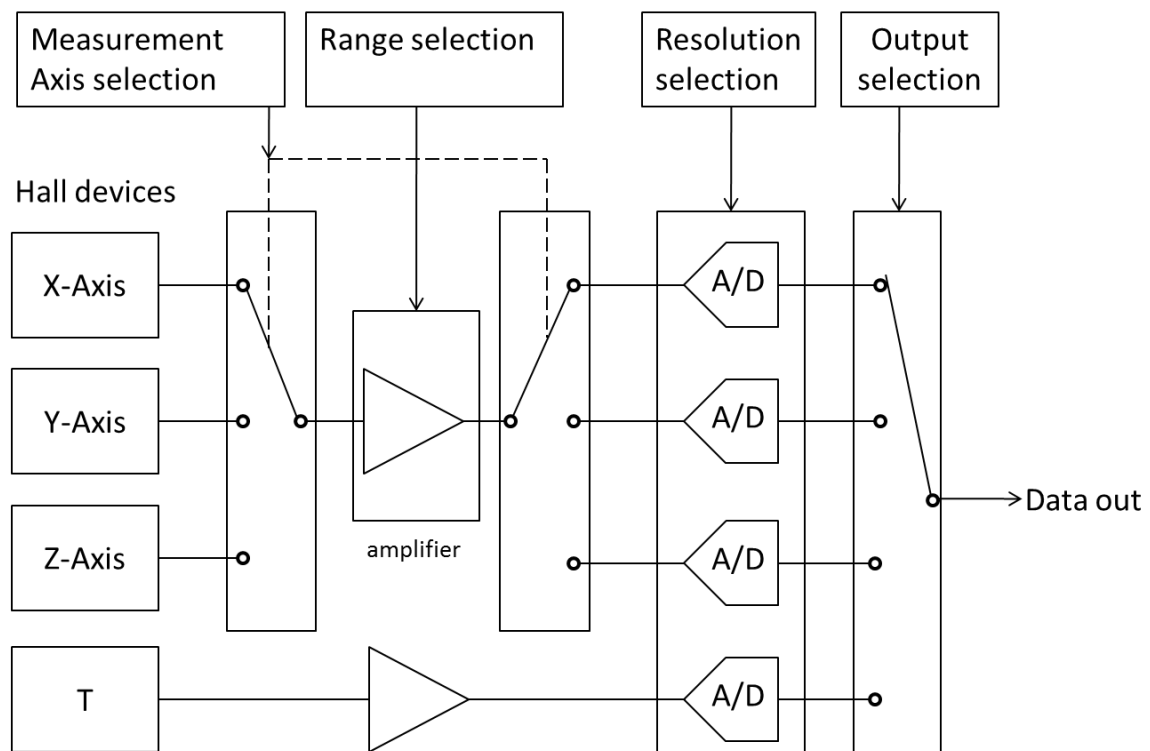


Figure 8. Block diagram of the signal conditioning – digital mode

4-3 A/D CONVERSION

The magnetic field signals out of the amplifier are de-multiplexed to the 3 A/D converters (see Figure 8).

The A/D output rate can be adjusted by the user, from 0.375 to 3 kHz. The output rate determines the integration time, and consequently the measurement resolution. Therefore, the parameter affecting the A/D rate is called “resolution” (RE). The user can trade off bandwidth against noise, choosing either low bandwidth with low noise, or high bandwidth with more noise.

The number of bits delivered by the MagVector MV2 always exceeds the resolution. In other words, the least significant bit is always fluctuating. This allows the user to further average the signal. When the resolution parameter is changed, the number of bits delivered to the output automatically changes (it can go from 14 to 16 bits).

When selecting the RE parameter, the user affects all four A/D conversions equally.

The A/D conversion block can be controlled by a logic input on INIT pin. Enabling INIT (tied to LOGIC 1) will reset and halt the A/D conversion; disabling INIT (floating or tied to LOGIC 0) will reinitialize and start the A/D conversion block operating. This option can be used to control the precise A/D conversion time. In normal operation, it is recommended to leave the INIT pin not connected.

The end of the A/D conversion is indicated by a Data Ready signal (see Section 4-5), which by default is routed to the DR pin. Optionally, this signal can be multiplexed with the MISO signal (see Section 4-16).

Note that enabling INIT generates a Data Ready, which should be cleared to avoid confusion with a “real” Data Ready once the A/D conversion has been restarted. To do so, it suffices to toggle the Chip Select.

4-4 OUTPUT STAGE

The digital value out of each A/D is stored in the output stage. When the user requests a certain output (one of the 3 axes or the temperature), the output stage multiplexer picks the selected channel and the value is transferred to the SPI interface.

Note that in the single axis mode, of the 3 magnetic field channels, only one contains meaningful data. For instance, if the measurement axis selected is only x, the channels y and z are disabled, and therefore provide zero-field digital values.

4-5 APPLICATION CIRCUIT

The MagVector MV2 is logical slave, and therefore the controller must send a chip select (\overline{CS}) and clock signal (CLK) in order to receive the data from the sensor (MISO). The data consists of the digital value of the selected output. Prior to receiving the data, the user must send a request containing some user settings. The request usually contains the output channel.

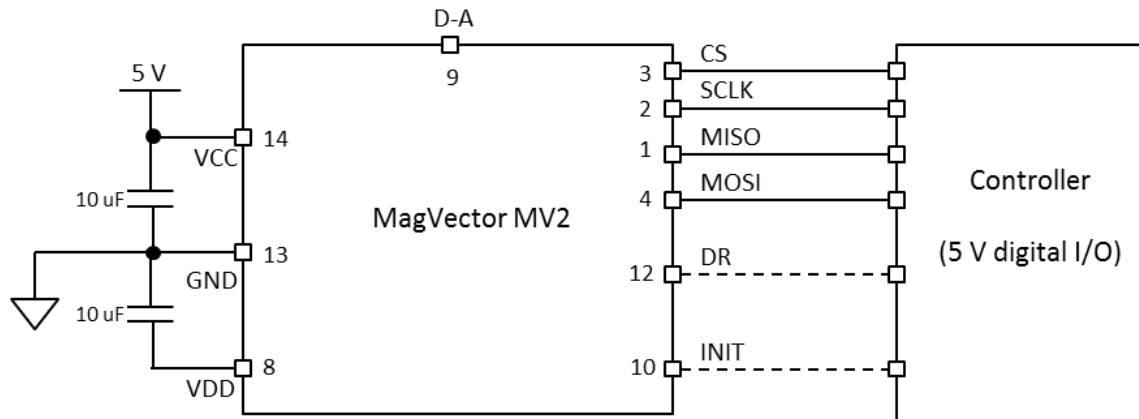


Figure 9. Circuit for sensor control and reading – digital mode

The Data Ready (DR) signal indicates that new data for all selected axes (see Section 4-15 MA – Measurement Axis) is ready (LOGIC 1); otherwise old data will be reread (LOGIC 0). DR passes from LOGIC 1 to LOGIC 0 as soon as the SPI transfer starts (\overline{CS} goes from LOGIC 1 to LOGIC 0).

By selecting the appropriate option bit, the Data Ready signal can be multiplexed with MISO, instead of requiring a signal line of its own (see Section 4-16). The controller can also control the exact timing of the A/D conversion, using the INIT pin (see Section 4-3).

4-6 MULTIPLE DEVICES

It is possible to connect several MagVector MV2s on the same SPI bus. In this case, SCLK, MISO and MOSI are connected in parallel, while the \overline{CS} signal is individual per chip. To avoid conflicting flows of data, only one data out (MISO pin) should be enabled at the time. For this reason the default value of the MISO pin is DISABLED and remains in a high impedance state (“tristate” logic) when the chip is in an idle state (\overline{CS} high).

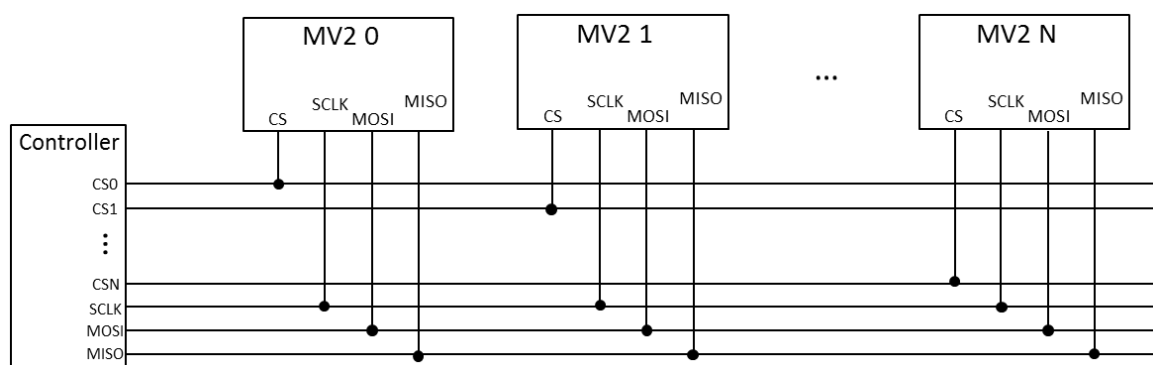


Figure 10. Parallel connection of MagVector MV2s

4-7 SERIAL COMMUNICATION

The MagVector MV2 is read and programmed by a master controller through a standard 4-wire Serial Peripheral Interface (SPI). See Table 11 for a summary of the SPI specification.

The sensor data are sent to the master via the MISO (Master In Slave Out) pin and the sensor can be programmed through MOSI (Master Out Slave In) pin. The MISO and MOSI words are 16 bits long. Within one single series of 16 clock counts, sent by the master, one MISO word and one MOSI word can be transmitted simultaneously. Two successive words must be separated by at least 100 ns.

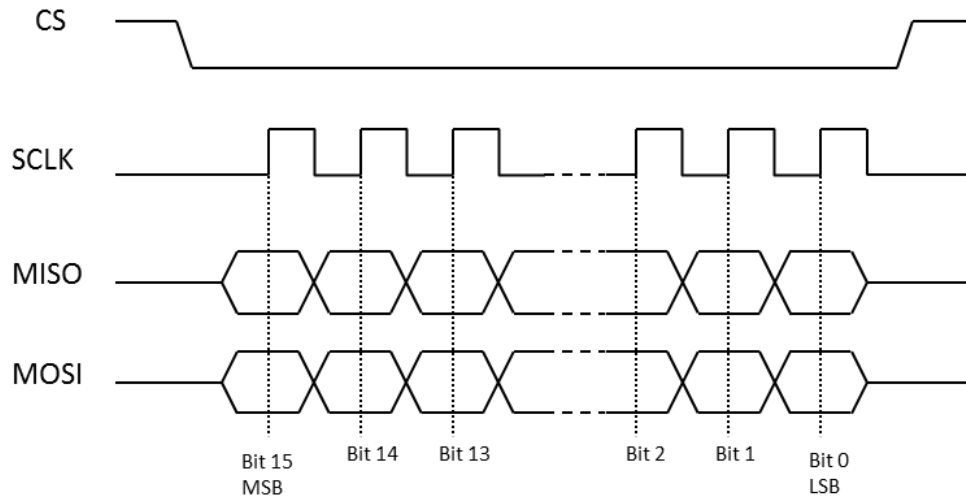


Figure 11. Timing diagram of one word

The availability of new data at the SPI port is indicated by DR signal. When a SPI communication cycle starts (falling edge of \overline{CS}), the DR signal is cleared until new data is available in the SPI output buffer. The SPI output buffer refresh rate depends on the A/D output rate (see Section 4-3).

4-8 COMMUNICATION PROTOCOL

The sensor is configured by sending a 16-bit word through the MOSI pin (see Section 4-9). In particular, this includes the requested measurement axis. The configuration data are then stored in one of three volatile registers, and will remain until another data word is sent to the same register or until the chip is powered off.

The sensor returns the Hall measurement of the requested axis as a 16-bit unsigned integer value (see Section 4-10). As a data word is read from the MagVector MV2, the configuration data for the next data word to be read (indicating, for instance, another measurement axis) can be sent simultaneously, within the same series of 16 clock counts (see fig. 4).

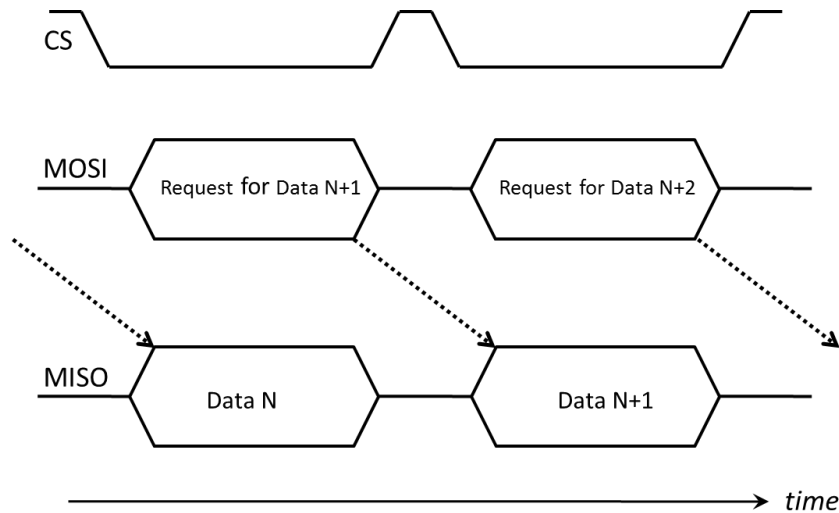


Figure 12. Sequence of data for communicating with the MagVector MV2

The user can read back the contents of the configuration registers at any time. By sending a request in the form of 8 bits (see Section 4-9), the MagVector MV2 returns the register value within the same transmission.

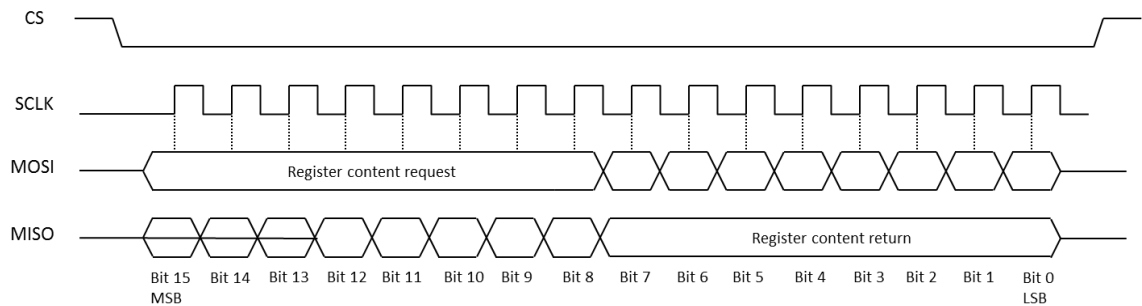


Figure 13. Timing diagram of the register read back

4-9 DATA FORMAT – DATA IN

To configure the device, a 16-bit word has to be sent. This word is composed of an 8-bit control address and an 8-bit value containing the user settings, as shown in Figure 14 and described in greater detail in Table 12.

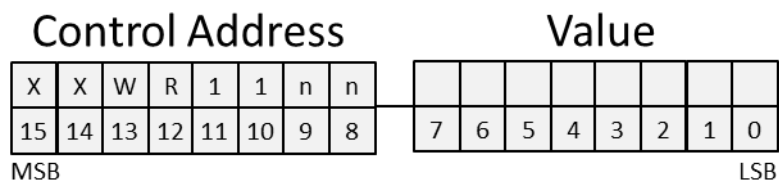


Figure 14. Format of Data In

Table 12. Format of Data In

Bit	Description
15 (MSB), 14	Don't Care
13	1 = Write: write the register
12	1 = Read: read back the register
11, 10	11
9, 8	Register number (see Section 4-11): 00: primary measurement specifications 01: other measurement options 10: temperature compensation and test
7 – 0 (LSB)	Register value to be programmed

Example: Configure the MagVector MV2 to read the Y-axis with a resolution of 15 bits, while the 3 measurement axes are scanned, with measurement range of 300 mT. The request to be sent is:

0 0 1 0 1 1 0 0 - 0 0 0 1 0 1 0 1

4-10 DATA FORMAT – DATA OUT

The magnetic field amplitude is transmitted in a word of 16 bits. The MSB is transmitted first.

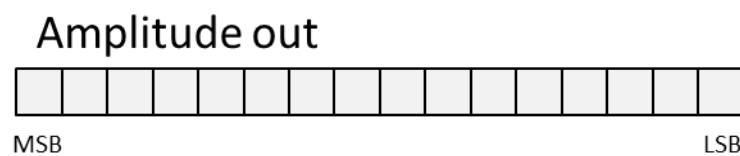


Figure 15. Format of Data Out

The digital output is an unsigned 16-bit integer value. When the MagVector MV2 is exposed to a magnetic field, the output value is proportional to the field up to the field range (100 mT, 300 mT, 1 T or 3 T; see Figure 16 for 100 mT), with a proportionality constant being the sensitivity parameter in Table 10. At zero magnetic field, the output would ideally be half the maximum value, $2^{15} = 32768$; in reality, the value will correspond to the sensor offset. The ADC saturates at a field roughly 20% larger than the range.

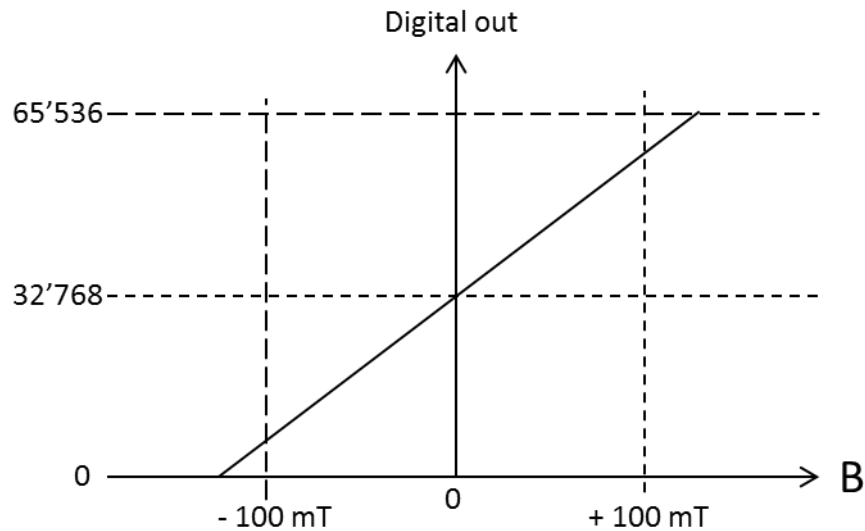


Figure 16. Output of one particular axis as a function of field strength.

4-11 REGISTERS

The following tables summarize the function of each bit in the three registers. Subsequent sections provide additional detail.

Table 13. Contents of Register 00

Register 00		Default value: all zeroes	
Bit	Name	Description	See
7 (MSB)	MA1	Measurement Axis MSB	Page 38, Section 4-15
6	MA0	Measurement Axis LSB	Page 38, Section 4-15
5	RE1	Resolution MSB	Page 37, Section 4-14
4	RE0	Resolution LSB	Page 37, Section 4-14
3	RA1	Range MSB	Page 37, Section 4-13
2	RA0	Range LSB	Page 37, Section 4-13
1	OS1	Output Selection MSB	Page 36, Section 4-12
0 (LSB)	OS0	Output Selection LSB	Page 36, Section 4-12

Table 14. Contents of Register 01

Register 01		Default value: all zeroes	
Bit	Name	Description	See
7 (MSB)	LMR	Large Measurement Range	Page 40, Section 4-22
6	SC	Spinning Current	Must be zero
5	EMR	Extended Measurement Range	Page 40, Section 4-21
4	HC	High Clock	Page 40, Section 4-20

3	INV	Invert	Page 40, Section 4-19
2	LP	Low Power	Page 40, Section 4-18
1	PO	Permanent Output	Page 39, Section 4-17
0 (LSB)	SP	Status Position	Page 39, Section 4-16

Table 15. Contents of Register 10

Register 10

Default values: DSB = TSC = 0, TC = 0001

Bit	Name	Description	See
7 (MSB)	DSB	Disable Separated Bias	Must be zero
6	TC3	Temperature Compensation 3 (MSB)	Page 41, Section 4-23
5	TC2	Temperature Compensation 2	Page 41, Section 4-23
4	TC1	Temperature Compensation 1	Page 41, Section 4-23
3	TC0	Temperature Compensation 0 (LSB)	Page 41, Section 4-23
2	TSC	Test System Clock	Must be zero
1		Unused	
0 (LSB)		Unused	

4-12 OS – OUTPUT SELECTION

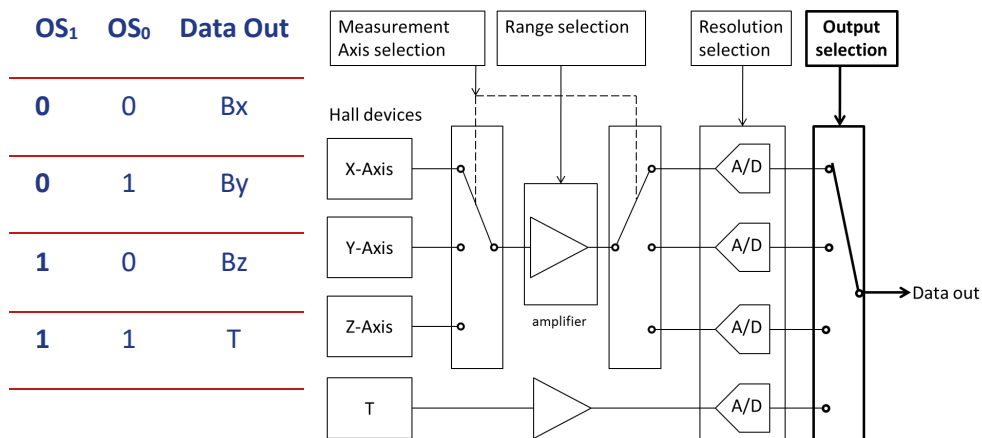
Register: 00

Bits: <Bit0> and <Bit1>

This option selects the channel (Bx, By, Bz or T) that will be delivered in the next SPI word out.

Note: when changing the range, or when changing the axis in single axis mode, the user should wait until the value is stable. The required delay corresponds to the ADC refresh rate: from 0.375 kHz to 3 kHz, depending on the resolution chosen.

Table 16. Output Selection



4-13 RA – RANGE

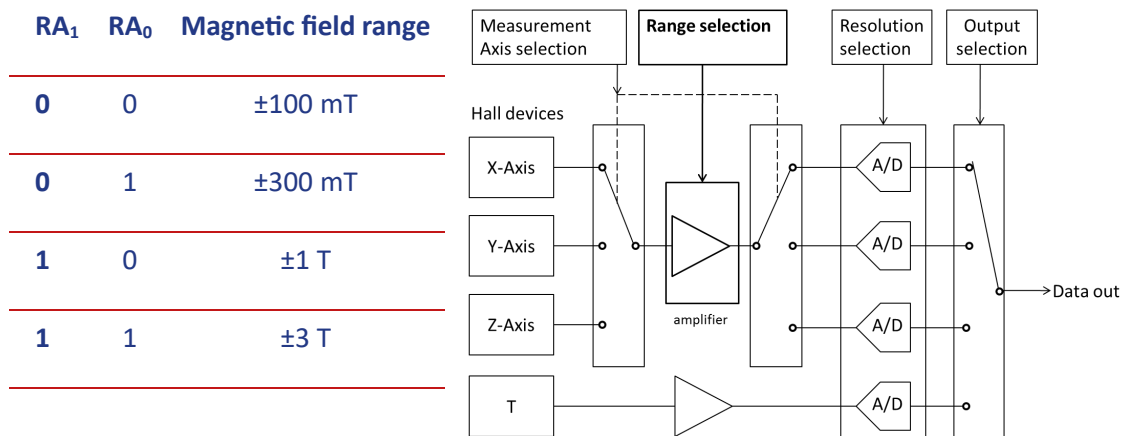
Register: 00

Bits: <Bit2> and <Bit3>

The RA parameter sets the amplification gain. When the measured magnetic field is within the range (between - range to + range), the sensor output is proportional to the applied magnetic field amplitude.

Note that the range also depends on the Extended Measurement Range (EMR – see Section 4-21) and Large Measurement Range (LMR – see Section 4-22) bits; the effective range is $RA * (1 + 0.333 * EMR + 9 * LMR)$.

Table 17. RA – Range selection – digital mode



4-14 RE – RESOLUTION

Register: 00

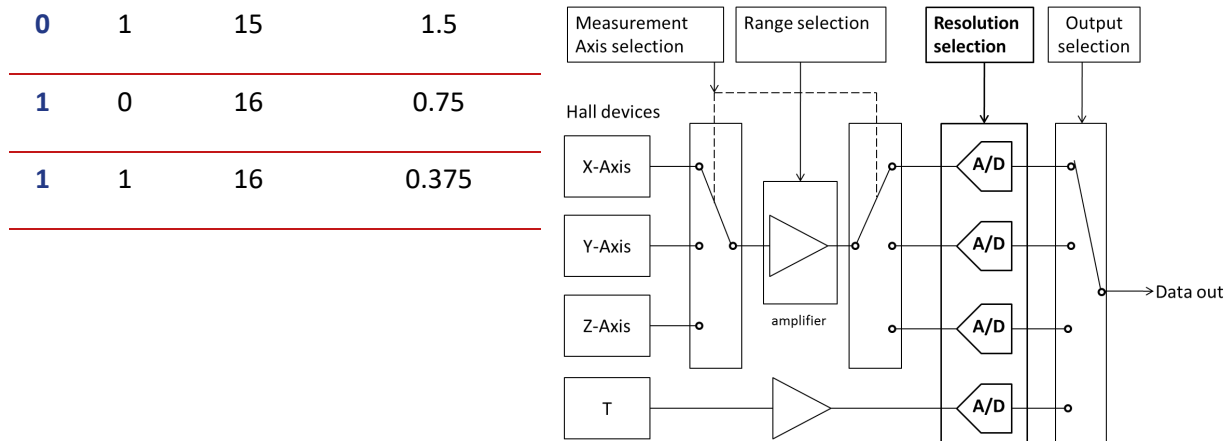
Bits: <Bit4> and <Bit5>

The resolution of the Analog-to-Digital (A/D) conversion is set by the parameter RE. This parameter affects the conversion time and the refresh rate at the output. Since a greater integration time reduces the noise, the parameter RE also changes the number of delivered bits.

Table 18. RE – Resolution Selection

RE ₁	RE ₀	Number of bits	Refresh rate (kHz) ⁶
0	0	14	3

⁶ Indicates maximum acquisition rate for all selected axes (see Section 4-15 MA – Measurement Axis) and temperature.



When the number of bits delivered N is smaller than 16, then the last $16-N$ bits (LSB) are zeros. For instance, if the number of bits delivered is 14, the output format is as follows:

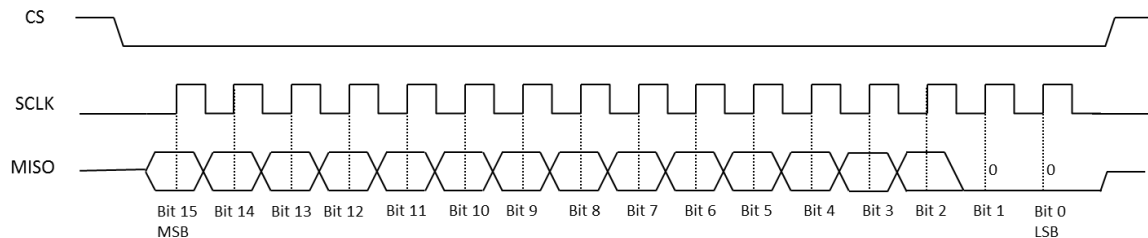


Figure 17. Timing of the data out when the resolution set to 14 bits.

4-15 MA – MEASUREMENT AXIS

Register: 00

Bits: <Bit6> and <Bit7>

The parameter MA determines which Hall device is amplified. Depending on the setting, all 3 axes are sequentially scanned (at the rate specified by the RE parameter – see Section 4-14) and amplified, or the scanning is stopped and only one selected axis is amplified. See the table below.

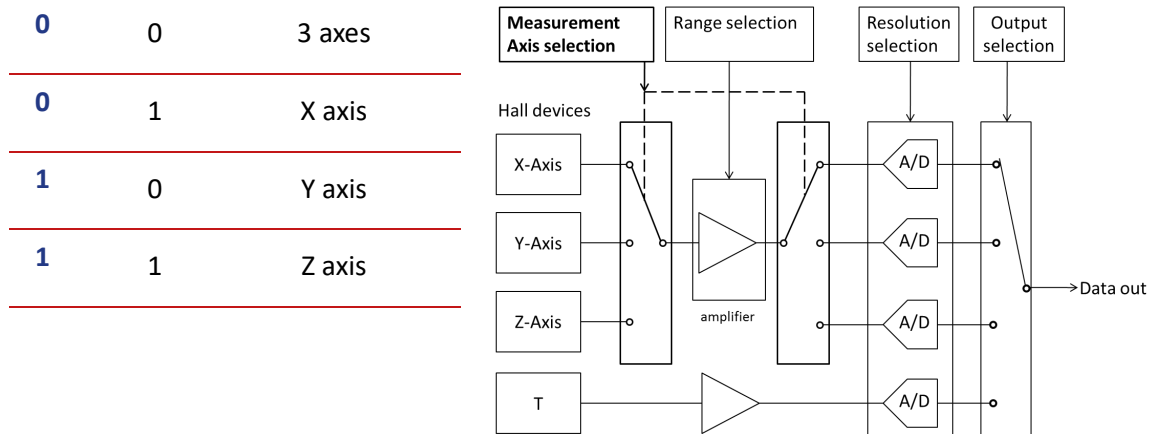
Note:

By eliminating switching noise, the single-axis modes provide improved resolution.⁷

Table 19. MA – Measurement axis selection – digital mode

MA₁ MA₀ Measurement axis

⁷ However, switching between single-axis modes (e.g. acquiring successive blocks of data with MA = 01, 10, 11, 01, 10, 11, ...), has been observed to cause small jump-discontinuities on each of the axes. The cause for this behavior is TBD.



4-16 SP – STATUS POSITION

Register: 01

Bits: <Bit0>

The availability of a new data to be read via SPI is indicated by the status signal Data Ready (see Section 4-5). By default, this signal is routed to the DR pin. To minimize the number of connections between the MagVector MV2 and a controller, the DR signal can be multiplexed with the MISO pin when SPI is idle (\overline{CS} pin at LOGIC 1).

Note that the PO (Permanent Output MISO) option has to be enabled to use this option.

The hardware position of Data Ready signal is summarized below.

Table 20. Status Position bit

SP	\overline{CS}	Pin 1	Pin 12
0	0	MISO	DR
0	1	MISO	DR
1	0	MISO	hiZ
1	1	DR	hiZ

4-17 PO – PERMANENT OUTPUT

Register: 01

Bits: <Bit1>

By default, the SPI output is disabled and the MISO pin is in a high impedance state (tri-stated) when the SPI is in idle state (\overline{CS} pin is tied to LOGIC 1). This allows connecting several MagVector MV2s in parallel on the same SPI bus.

However, a MISO pin in high impedance state may generate a significant current consumption out of the master device. Therefore, if there is only a single MagVector MV2 on the SPI bus, it is recommended to permanently activate the MISO output. In this case, the MISO output remains at a well-defined logic level, even when SPI is idle ($\overline{\text{CS}}$ pin at LOGIC 1).

4-18 LP – LOW POWER

Register: 01

Bits: <Bit2>

The MagVector MV2 can be switched to a low power mode. This mode reduces the current consumption by ~6 mA and the SNR by a factor of $\sqrt{2}$. Note that other parameters, such as temperature drift or offset, can also change.

4-19 INV – INVERT

Register: 01

Bits: <Bit3>

When the INV option is enabled, the MagVector MV2 reverses the Hall bias currents, and therefore reverses the measured magnetic field outputs relative to $2^N/2$ (where N represents the ADC resolution). Toggling this option can be used, for example, to emulate a low frequency modulator / demodulator.

4-20 HC – HIGH CLOCK

Register: 01

Bits: <Bit4>

Enabling the HC option doubles the analog clock, which improves the SNR, typically by a factor of $\sqrt{2}$. However, in three-axis measurement mode (MA = 00), the MagVector MV2 may suffer from a slight cross-sensitivity between axes, and selecting this option will provide worse cross sensitivity.

4-21 EMR – EXTENDED MEASUREMENT RANGE

Register: 01

Bits: <Bit5>

Enabling the EMR option increases the selected range (RA – see Section 4-13) by 30%. In principle, this option is intended to be used in analog mode (see Section 3-10), to approximately compensate the reduced voltage swing of the output buffer when using a 3.3 V supply instead of 5 V.

4-22 LMR – LARGE MEASUREMENT RANGE

Register: 01

Bits: <Bit7>

Enabling the LMR option increases the selected range (RA – see Section 4-13) by 10x. This option is intended to extend the measurement range to 10 or 30 T, for very strong fields.

4-23 TC – TEMPERATURE COMPENSATION

Register: 10

Bits: <Bit3> through <Bit6>

Typically, the sensitivity of the Hall devices drifts with temperature (see Table 10). In order to compensate the temperature induced sensitivity drift, the Hall bias can be programmed to acquire a linear dependence with temperature. By default, TC=0001, which means that the gain is constant. The optimum value of TC needs to be found experimentally.

5- EVALUATION KIT

The MagVector™ MV2 Evaluation Kit provides a flexible turnkey hardware and software environment that allows all features of the MagVector MV2 to be exercised. The kit consists of:

- Test board with MagVector MV2 sensor
- Preprogrammed Arduino board that connects to the test board
- Arduino firmware to drive the MagVector MV2, including source code
- Host software to exercise the MagVector MV2, including source code
- Two unmounted MagVector MV2 sensors

5-1 TEST BOARD

The test board is as shown in Figure 18. The schematics are shown in Figure 19, and the signal routing is summarized in Table 21.

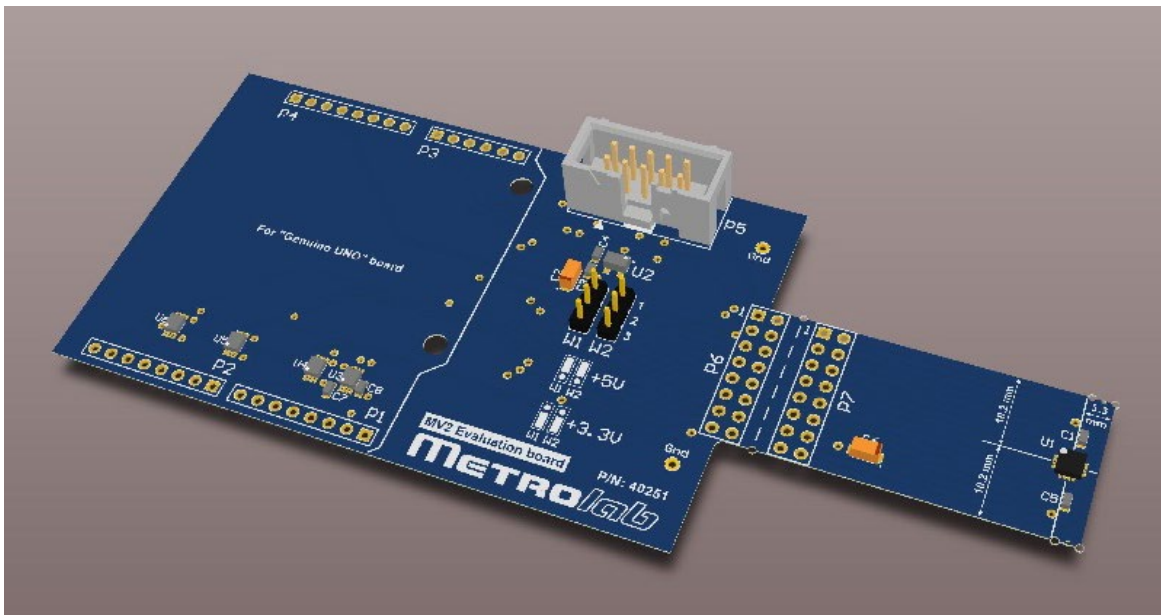


Figure 18. MagVector MV2 Evaluation Kit test board.

The MagVector MV2 is located on the end of the protrusion shown on the right, at location U1. The exact location of its field sensitive volume is indicated on the PCB. The MV2's thermal flag is soldered to a thermal pad, which in turn is connected by thermal vias to the ground plane on the back side of the

protrusion.⁸ If needed, the protrusion can be cut off, and reconnected to the rest of the test board with a ribbon cable (ribbon-cable connectors at P6 and P7).

The test board can power the MV2 at 3.3V or 5V, selectable by two jumpers at W1 and W2. The jumper settings are as indicated on the PCB. If 5V is selected, the MagVector MV2 is powered directly by the 5V supply provided by the Arduino, and uses the internal regulator. If 3.3V is selected, the MagVector MV2 is powered by a precision regulator, powered in turn by the Arduino's 5V supply.

⁸ See, for example, the *Cirrus Logic Application Note AN315*, "Thermal Considerations for QFN Packaged Integrated Circuits."

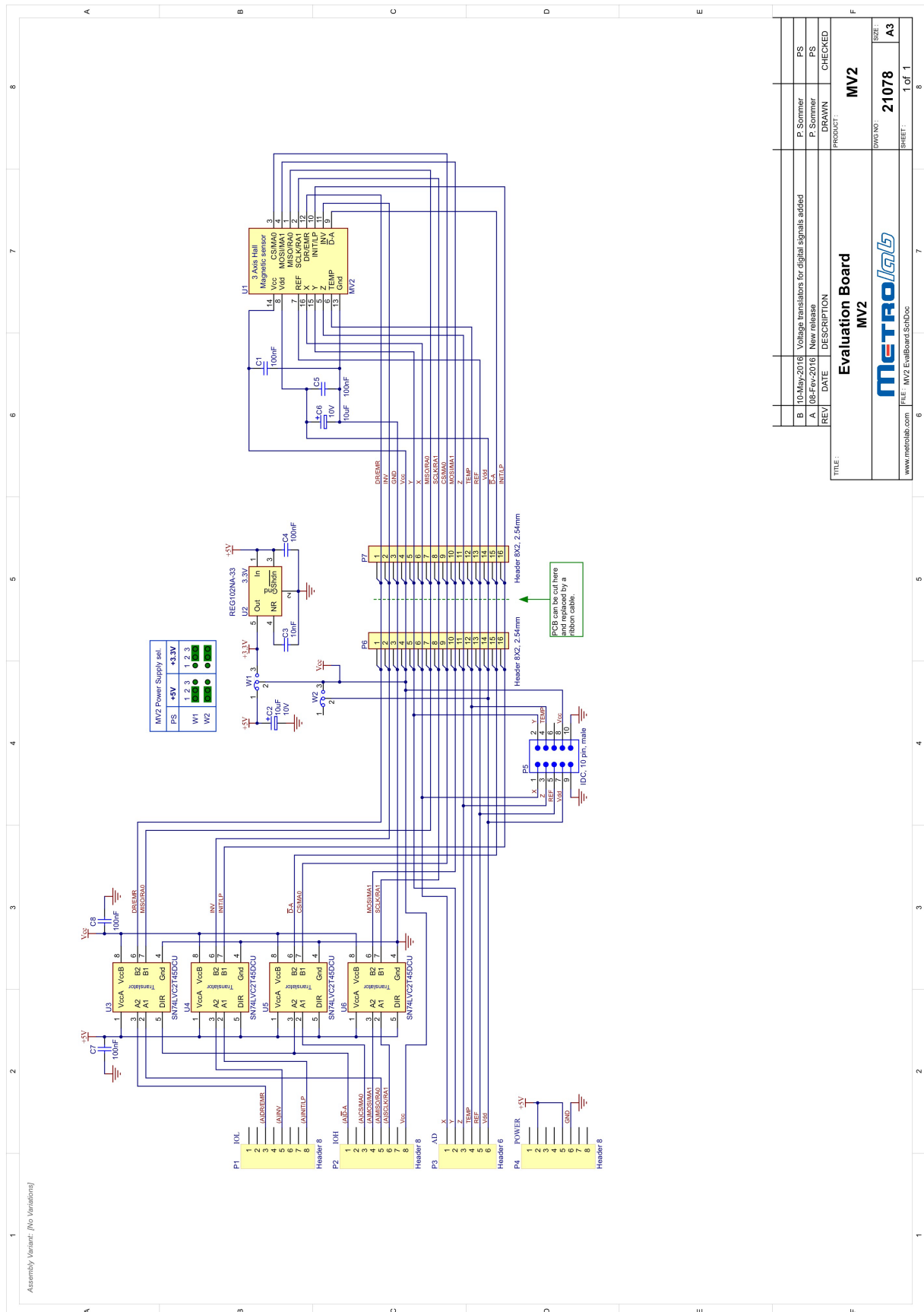


Figure 19. Schematics of MagVector MV2 Evaluation Kit test board

Table 21. Signal routing of MagVector MV2 Evaluation Kit test board

MagVector MV2			Arduino UNO		Description	
Pin	Analog	Digital	Header pin	Signal	Direction	
1	RA0	MISO	IOH-5	MISO	Out / In	Range / SPI MISO
2	RA1	SCLK	IOH-6	SCK	Out	Range / SPI clock
3	MA0	$\overline{\text{CS}}$	IOH-3	SS	Out	Axis select / Chip Select
4	MA1	MOSI	IOH-4	MOSI	Out	Axis select / SPI MOSI
5	Z	-	AD-3	AD2	In	Bz analog output
6	TEMP	-	AD-4	AD3	In	Temperature analog output
7	REF	-	AD-5	AD4	In	VCC/2 analog output
8	VDD (3.3V)	-	AD-6	AD5	In	Core supply monitor
9	$\overline{\text{D}}\text{-A}$ (0V or VCC)	-	IOH-1	IO8	Out	Digital-analog selection
10	LP	INIT	IOL-8	IO7	Out	Low power / Start ADC
11	INV	-	IOL-5	IO4	Out	Invert
12	EMR	DR	IOL-3	IO2	Out	Large range / Data Ready
13	GND	-	POWER-6	GND	-	Ground
14	VCC (5V or 3.3V)	-	IOH-8	AREF	In	VCC for ADC reference
15	Y	-	AD-2	AD1	In	By analog output
16	X	-	AD-1	AD0	In	Bx analog output
-	-	-	POWER-5	+5V	-	5V supply from Arduino

Note that all the analog-output signals – X, Y, Z, TEMP, plus REF and VCC – are routed to the Arduino UNO's analog inputs, where they can be digitized. However, the Arduino UNO has 10-bit ADCs; to digitize the signal with higher resolution, an external digitizer can be connected to connector P5. The pin-out of this connector is shown in Table 22.

Table 22. Connections from MagVector MV2 Evaluation Kit test board to external digitizer.

Pin	Signal
P5-1	X
P5-2	Y
P5-3	Z
P5-4	TEMP
P5-5	REF

P5-6	n/c
P5-7	VDD
P5-8	VCC
P5-9	GND
P5-10	GND

5-2 ARDUINO BOARD

Arduino is a widely-used, open-source prototyping platform based on easy-to-use hardware and software. The Arduino Integrated Development Environment (IDE) and extensive documentation is available from the site <https://www.arduino.cc>.

An Arduino UNO, touted as the most robust board in the Arduino family, is included in the MagVector MV2 Evaluation Kit. Note that due to a trademark conflict, the Arduino UNO is sold as the “Genuino UNO” outside of the USA.

As shown in Figure 20, the Arduino UNO’s connectors mate exactly with those on the test board: the Arduino UNO Digital headers (IOL and IOH) connect to P1 and P2, respectively, on the test board; the Arduino UNO Analog (AD) and Power (POWER) headers connect to P3 and P4, respectively, on the test board. Note that the last two pins of the Digital header (IOH-9 – SDA and IOH-10 – SCL are not connected to the test board.

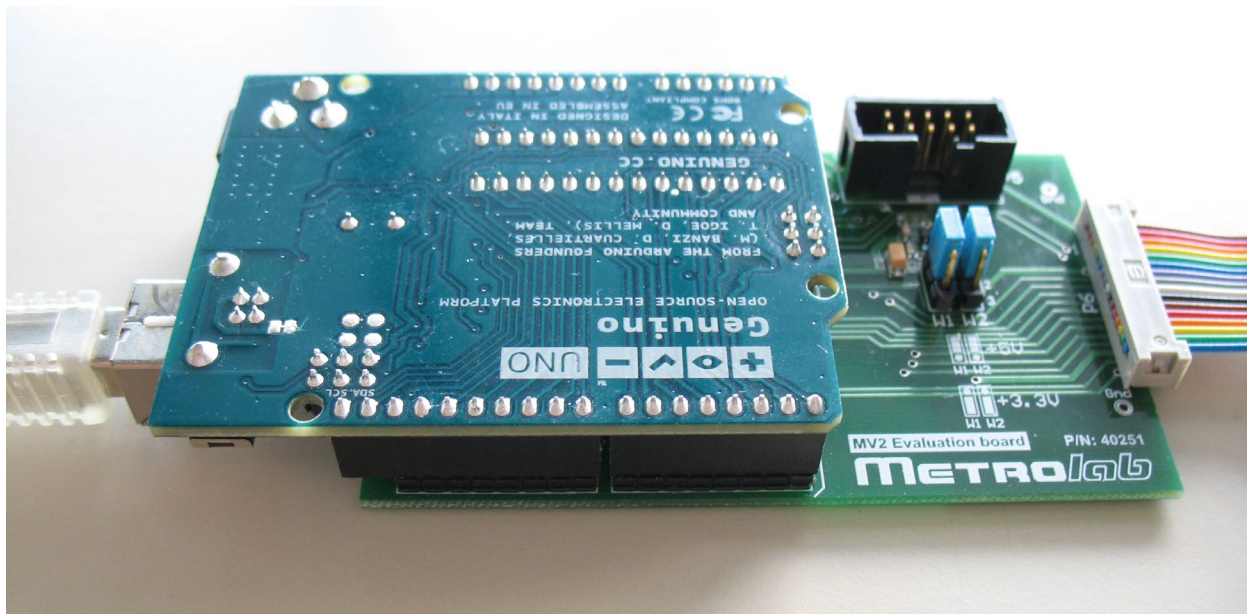


Figure 20. Arduino/Genuino UNO connected to MagVector MV2 test board.

The Arduino UNO is usually powered by USB, but it can optionally be powered by an external supply of 7 to 12V – see the technical documentation for the Arduino UNO.

The Arduino UNO connects to the host computer via a standard USB cable. It uses the USB CDC (USB Communications Device Class) protocol, which automatically creates a virtual serial port on modern Windows, Macintosh or Linux platforms. The serial port is named as follows:

- Windows: COMx, where “x” depends on the number of other COM ports installed. For the Arduino to be properly recognized, you have to install the “arduino.inf” file included in the directory “MV2\binaries\windows\drivers” of the MagVector MV2 Evaluation Kit: in the Windows Explorer, right-click on the file name and select “Install”.
- Macintosh: /dev/cu.usbmodemX, where “X” depends on the USB port the Arduino is plugged into.⁹ Use the command “ls /dev/cu.usbmodem*” to determine the exact name of the virtual serial device. USB CDC support is included in Mac OS X 10.3.7 and later.
- Linux: /dev/ttyACMx, where “x” depends on the number of other ACM (“Abstract Control Model”) modems installed.⁹ You probably have to modify the access rights: “sudo chmod ugo+rw /dev/ttyACMx”.

Note that the Arduino enumerates itself as an ACM modem, but in fact it does not respond to the Hayes control protocol at all.

5-3 ARDUINO FIRMWARE

5-3-1 Functional overview

The Arduino firmware is a general-purpose driver, capable of exercising every feature of the MV2, in either analog or digital mode.

It reads a command script from the host serial port, executes it, and returns the results via the host serial port. The command script may include a single level of looping. The command script input and the resulting output have a header specifying the transfer length and a trailer with a CRC. The output also includes a return status.

The script buffer sent to the firmware is structured as follows: (lengths given as 16-bit words)

Header (1 W)	Script (64 W max)	CRC (1 W)
--------------	-------------------	-----------

The response buffer received from the firmware is structured as follows:

Header (1 W)	Results (496 W max)	Status (2 W)	CRC (1 W)
--------------	---------------------	--------------	-----------

⁹ In fact, two devices are created: /dev/tty... and /dev/cu.... In Unix systems, /dev/tty was historically used for incoming calls on a modem; an open will stall until the modem asserts DCD (Data Carrier Detect). In contrast, /dev/cu was used for outgoing calls (“cu” stands for “calling unit”), and an open completes immediately. In this context, you should use /dev/cu.

- In both cases, Header is the length in bytes of the entire buffer to be transferred (including header and CRC), and CRC is the 16-bit exclusive-OR of the entire buffer up to the CRC.
- Script is a variable-length list of 1-word commands, as defined in Subsection 5-3-2.
- Results is a variable-length list of 1-word values containing the return value for each command that returns one.
- Status is a 1-word Error Code followed by a 1-word Error Description, as defined in Subsection 5-3-3.

5-3-2 Command definitions

The general command structure is as follows:

Command Type								Command Value							
15	14	13	12	11	10	9	8	7	6	5	4	3	2	1	0
MSB														LSB	

- Bits 15 and 14 define a class of commands:
 - 00: Digital commands
 - 01: Analog commands
 - 11: Miscellaneous commands
- Bits 13 to 8 define a specific command.
- Bits 7 to 0 define the value to write.

The commands are summarized in Table 23:

Table 23. Command definitions.

DIGITAL MODE COMMANDS			
Command Type (Hex)	Command Value	Description	Return value
1C	00	Read Register 00	Register 0 contents
1D	00	Read Register 01	Register 1 contents
1E	00	Read Register 10	Register 2 contents
2C	XX = Register value	Write Register 00	Previously selected data value
2D	XX = Register value	Write Register 01	Previously selected data value

2E	XX = Register value	Write Register 10	Previously selected data value
01	00 or 01	Set / Reset INIT bit	None
02	00	Wait for DR	None

ANALOG MODE COMMANDS

Command Type (Hex)	Command Value	Description	Return value
41	00	Digitize B _x	B _x
42	00	Digitize B _y	B _y
43	00	Digitize B _z	B _z
44	00	Digitize Temperature	Temperature
45	XX: Bits Meaning	Set control lines	None
	7 –		
	6 EMR		
	5 INV		
	4 LP		
	3,2 MA		
	1,0 RA		

MISCELLANEOUS COMMANDS

Command Type (Hex)	Command Value	Description	Return value
C1	00 or 01	Set digital/analog mode	None
C2	XX = loop count	Set loop start	None
C3	00	Set loop end	None
C4	00	Get firmware version	Firmware version, in Binary Coded Decimal (e.g. 0x0102 means version 1.2)

5-3-3 Return status definitions*Table 24. Return status definitions*

Meaning	Error Code Field	Error Description Field
No Error	0	None
Syntax Error	101	Command number
Mode Error	102	Command number

Out of Memory Error	103	Command number
Nested Loop Error	104	Command number
Unspecified Loop Error	105	Command number
Bad CRC Error	201	None
Script Length Too Large Error	202	Script length
No Valid Data From Host Error	203	None
Transmission Error	204	None
ADC Time Out Error	301	Command number

5-3-4 Rebuilding the firmware

The Arduino UNO included with the MagVector MV2 Evaluation Kit is preprogrammed with the latest firmware. Unless you want to update or customize the firmware/software, you can ignore this subsection.

To recompile the firmware and reprogram the Arduino UNO, download and install the [Arduino Integrated Development Environment \(IDE\)](#), available for Windows, Macintosh and Linux. Once installed:

- Copy the firmware source code from the MagVector MV2 Evaluation Kit, in the directory “MV2/Source/instrument/MV2”, to a directory on your computer.
- Launch the Arduino IDE.
- Within the IDE, open the file MV2.ino.
- Select Tools > Board > Arduino/Genuino UNO.
- Select Tools > Port > (virtual serial port name, as described in Section 5-2).
- Select Sketch > Verify/Compile.
- Select Sketch > Upload.

Note that the Arduino IDE uses a default tab setting of 2 spaces, whereas the Metrolab code uses 4 spaces. To correct this, quit the Arduino IDE, open the Arduino preferences file, “preferences.txt”, change the “editor.tabs.size=” line, and restart the Arduino IDE. The preferences file is in AppData\Roaming\Arduino15 in Windows, ~/Library/Arduino15/ on Macintosh, and ~/.arduino15 in Linux.

5-4 HOST SOFTWARE

The host software uses the serial interface to the Arduino firmware to, for example, repeatedly measure B_x , B_y , B_z and Temperature.

5-4-1 Functional overview

The command scripts to be sent to the Arduino firmware (see Section 5-3-1) are read from a setup file, thereby allowing experimentation with all the MagVector MV2's options. The setup file is a human-readable XML (Extensible Markup Language) file.

The setup file contains two command scripts: one for initialization, and one for measurements. The measurement script also specifies:

- The expected location of the measurement results in the output array, along with a label.
- The number of times to run the measurement loop. If the count is zero, the measurement loop will run forever, until the user kills the program.
- Any loop commands, with its count and an option to average the results.

Included in the MagVector MV2 Evaluation Kit are two basic setup files, one for analog mode and one for digital mode.

The host software is written in C++, as a simple command-line program that can be compiled and run on Windows, Macintosh and Linux platforms. The results are written to the standard output, and errors to the standard error streams; this allows the results to be piped to another program or redirected to a recording file. The results can also be recorded to a file in the "Metrolab XML Record" (MXR) format.

5-4-2 Installation and execution

Copy the MV2 directory from the distribution medium to your computer. In a command shell, change your working directory to "MV2/binaries/<OS>", where "<OS>" is your operating system type.

Then execute MV2Host, with the following syntax:

```
MV2Host <MV2ScriptXml-file> <MV2ScriptSchemaXsd-file> <COM port> [MXR-file]
```

where:

- <MV2ScriptXml-file> is the setup file that contains the commands sent to the MagVector MV2. The directory MV2/host/script contains two sample scripts, for analog and digital acquisition, respectively.
- <MV2ScriptSchemaXsd-file> is the XML schema file, used to check the syntax of the setup file. You should normally use the file MV2/host/script/MV2/host/script.xsd.

- <COM port> is the name (or, in UNIX-like systems, the path) of the virtual serial port where the Arduino is plugged in, as described in Section 5-2 .
- [MXR-file] is an optional parameter that specifies the pathname of a “Metrolab XML Record” (MXR) file to which to record the measurements. This is a self-documenting, human-readable XML file. It consists of a header section and a body section; the body section, in turn, is decomposed into a series of datasets, each with a table of measurement data, column headings, and associated instrument settings.

Note that you may have to make the program executable (“chmod ugo+x MV2Host”). Also note that MV2Host is built as a 64-bit executable; for 32-bit machines, you have to rebuild the program as described in Section 5-4-4.

Sample execution on a Macintosh:

```
$ cd MV2/binaries/macintosh/  
  
$ ./MV2Host ../../host/script/MV2DigitalScript.xml  
../../host/script/MV2ScriptSchema.xsd /dev/cu.usbmodem14101  
  
31328,34992,33628,18200  
  
31328,34996,33628,18200  
  
31332,34992,33632,18200  
  
31328,35000,33632,18200  
  
31332,34992,33632,18200  
  
31328,35000,33624,18200  
  
31328,34992,33632,18200  
  
31328,35000,33628,18200  
  
31332,35000,33628,18200  
  
31332,35000,33632,18200  
  
^C31328,34996,33624,18200  
  
31332,34996,33628,18200  
  
31328,34996,33632,18200  
  
31332,34996,33628,18200  
  
31332,34992,33624,18200  
  
31328,34996,33632,18200  
  
31328,35000,33632,18200  
  
31328,35000,33628,18200
```

```
31332,35000,33628,18200
```

```
31332,34992,33632,18200
```

```
Interrupt received!
```

```
$
```

5-4-3 Setup file format

Please see the sample files in the MV2/host/script directory.

The overall structure of a setup file is as follows:

```
<?xml version="1.0" encoding="UTF-8"?>

<scripts>

    <initialization>

        ...

    </initialization>

    <measurement repeat="...">

        ...

    </measurement>

</scripts>
```

where the <initialization> section defines the commands to be sent during initialization, and the <measurement> section during the measurement phase (see Section 5-4-1). The “repeat” parameter specifies the number of times the measurement script is to be executed; zero means an infinite number of times – i.e. until the user kills the program.

A command to be sent to the MagVector MV2 (see Table 23) is specified as follows:

```
<command outputIndex="..." outputName="...">

    <type>...</type>

    <value>...</value>

</command>
```

where the “<type>” section specifies the Command Type, and the “<value>” section the Command Value, as hexadecimal bytes, as shown in Table 23. The “outputIndex” parameter specifies the index in the output buffer (array of 16-bit words) where the return value will be located, and the “outputName” parameter specifies a name for this data. Since the output buffer is ignored during initialization, these two parameters can be dropped for commands in the <initialization> section.

A sequence of commands can be repeated using a <loop> section:

```
<loop count="..." average="true|false">
```

...
</loop>

where the “count” parameter specifies the loop count, and the “average” parameter specifies whether or not to average the results before returning them. Loops cannot be nested.

5-4-4 Recompilation

The MagVector MV2 Evaluation Kit host software is designed to be compiled in a Unix-style development environment (see Section 5-4-5). You must also have installed the libxml2 library and its headers (see Section 5-4-6).

Once these requirements have been met, the build process should be straightforward:

- Copy the MagVector MV2 Evaluation Kit software – the directory “MV2” – to your computer.
- In a command-line shell, change your working directory to MV2/host/build.
- Type “make”.

The Makefile has several options; the full syntax is as follows:

```
make [OPT=[DEBUG],[RELEASE]] [LIBXML_DIR=<path>] [all | clean]
```

where

- OPT=DEBUG compiles a debug version, with symbols and no optimization. Default is no symbols and -O3 optimization.
- OPT=RELEASE builds a distributable executable, with statically linked libraries to the extent possible. Default is dynamically linked.
- LIBXML_DIR=<path> specifies the location of libxml2 (see Section 5-4-6). Default is “../libxml”.
- The “all” target builds the application. This is the default target.
- The “clean” target deletes the build files.

5-4-5 Development environment

The recommended development environments for the different platforms are as follows:

Windows:

MSYS2 is a free and open source Unix-like development environment for creating native Windows applications. Install MSYS2 as follows:

- Download and install MSYS2 as described on <https://www.msys2.org>.

- Install the development tools:

```
pacman -S base-devel gcc vim cmake
```

Macintosh:

- Install Apple's Xcode development environment from the Mac App Store.
- Install the command line tools:

```
xcode-select --install
```

- For older versions of MacOS, see [the Xcode installation instructions on the MacPorts web site](#).

Linux:

- Install the development tools. The package manager and package name vary from one distribution to the next; see, for example, [this article](#) for guidance.

5-4-6 Installing the libxml2 library

Building the MagVector MV2 Evaluation Kit host software requires version 2.9.x or later of libxml2, a widely used XML (Extensible Markup Language) parser. The developer package, with header files and the libraries, are required. There are many ways to install libxml2 (see [xmlsoft.org](#)); here are a few possibilities:

Windows:

In MSYS2, use the package manager:

```
pacman -S libxml2-devel
```

Macintosh:

Install [MacPorts](#) and use it to install the libxml2 package:

```
sudo port install libxml2
```

Linux:

Install version 2.9.x or later of the libxml2-dev package. For example, in Ubuntu:

```
sudo apt-get install libxml2-dev
```

Build from scratch:

Download the libxml2 package from [the GIT repository](#), and build and install it as described in the README file. You may have to download supporting packages, or you can disable packages during the configuration step (./configure --help to see the options; ./configure --without-xxx to configure without support for "xxx").